



**PHILIPS**

Professional Lighting

**LEADING PROJECT  
SUPPLIER & STOCKIST  
OF ALL TYPES OF  
ELECTRICAL GOODS**



**Chandan Electric Corporation**

*Since 1985*

**Office Add.** 89, Princess Street, 2nd Flr., Peerbhoy Building, Pathak Wadi, Lohar Chawl, Mum-02.

**Telephone** 022 - 2208 7580 / 3956 7492 / 4003 9101 **Fax** 022 - 2201 9101

**Mobile** 91 - 9820486600 / 9029895008 **Website** [www.chandanelectric.in](http://www.chandanelectric.in)

**Email** [chandanelectric@hotmail.co.in](mailto:chandanelectric@hotmail.co.in) / [info.chandanelectric@gmail.com](mailto:info.chandanelectric@gmail.com)



**Your Vision.  
Our Solutions.**

Effective 1st February, 2021



Proudly illuminating India  
for more than 90 years



Signify is the world  
leader in lighting

Founded as Philips in Eindhoven, the Netherlands, we've led the lighting industry with innovations that serve professional and consumer markets for more than 127 years. In 2016, we spun off from Philips, becoming a separate publicly owned company, listed on Amsterdam's Euronext Stock Exchange. We were included in the benchmark AEX index in March 2018.



**PHILIPS**

Our global brand in  
professional and consumer  
lighting

**interact**

Our Internet of things  
platform and connected  
lighting systems

**COLOR KINETICS**

Our inspiring range of  
high-performance lights to  
uniquely light up the monuments

Signify proudly markets the best lighting brands in the world and is the world-leader in offering innovative products and sustainable lighting solutions in professional as well as consumer markets.



# Contents

## Introduction

|                                      |          |
|--------------------------------------|----------|
| <b>Indoor Commercial</b>             | <b>7</b> |
| Suspended-Surface Mounted Luminaires | 9        |
| Recessed Mounted Luminaires          | 16       |
| Commercial Battens                   | 23       |
| Downlighters & Spot Lights           | 24       |
| Track & Spot Lights                  | 29       |
| Cove Lights                          | 33       |
| Trunking                             | 35       |

|                           |           |
|---------------------------|-----------|
| <b>Indoor Industrial</b>  | <b>37</b> |
| Highbays                  | 38        |
| LED Bulkhead & WellGlass  | 43        |
| Industrial Battens        | 45        |
| Waterproof LED Luminaires | 46        |
| InteractPro               | 48        |

|                    |           |
|--------------------|-----------|
| <b>Outdoor</b>     | <b>52</b> |
| Street Lights      | 54        |
| Interact City      | 58        |
| Flood Lights       | 60        |
| Interact Sports    | 65        |
| Landscape Lighting | 68        |
| Tunnel Lights      | 75        |

|                             |           |
|-----------------------------|-----------|
| <b>Architectural Lights</b> | <b>77</b> |
| Uniflood                    | 83        |

|                       |           |
|-----------------------|-----------|
| <b>Solar Lighting</b> | <b>88</b> |
|-----------------------|-----------|

|                         |    |
|-------------------------|----|
| Smart Poles             | 94 |
| Lighting Controls       | 96 |
| In-house Software Suite | 98 |

|           |    |
|-----------|----|
| LED lamps | 68 |
|-----------|----|



# Philips **LED lighting**

Leading the market today,  
**transforming the future.**

Philips has been designing, developing and manufacturing LED lighting products resulting in a far reaching intellectual property portfolio and more than 20,000 time-tested installations. We have strengthened our leadership position and revenue generation in the LED Lighting market with solutions across segments, offices, retails, industries and public. We are leaders in technology and product performance in the LED lighting industry and are a confident choice of lighting specifiers across the globe.





# Indoor Commercial

## Suspended-Surface Mounted Luminaires

### PureLine Slim Surface & Suspended 60mm/75mm Width

Suspended 60mm/75mm width aluminium extruded linear lighting luminaires with superior white powder coated finish. Multiple options of light distribution, run lengths and lumen packages for different application to choose from.



| Type                                       | HSN Code | MRP (INR) |
|--------------------------------------------|----------|-----------|
| SP780 P LED52S-6500 PSU W6L224 OD SI       | 9405     | 24,000/-  |
| SP780 P LED26S-6500 PSU W6L112 OD SI       | 9405     | 12,000/-  |
| SP780P LED52S-6500 PSU W7L224 OD SI        | 9405     | 25,000/-  |
| SP780 P LED33S-6500 PSU W7L112 OD SI       | 9405     | 12,500/-  |
| SP780 X LED44S-6500 PSU W6L224 OD SI       | 9405     | 23,000/-  |
| SP780 X LED52S-6500 PSU W6L224 OD SI       | 9405     | 23,000/-  |
| SP780 X LED22S-6500 PSU W6L112 OD SI       | 9405     | 12,000/-  |
| SP780 X LED26S-6500 PSU W6L112 OD SI       | 9405     | 12,000/-  |
| SP780X LED11S-6500 PSU W6L56 OD SI         | 9405     | 7,700/-   |
| SP780X LED46S-6500 PSU W7L224 OD SI        | 9405     | 24,000/-  |
| SP780X LED52S-6500 PSU W7L224 OD SI        | 9405     | 24,000/-  |
| SP780 X LED23S-6500 PSU W7L112 OD SI       | 9405     | 12,000/-  |
| SP780 X LED26S-6500 PSU W7L112 OD SI       | 9405     | 12,000/-  |
| SP781 P LED66S-6500 PSU W6L224 OD SI       | 9405     | 29,000/-  |
| SP781 P LED33S-6500 PSU W6L112 OD SI       | 9405     | 15,000/-  |
| SP781 X LED23S-6500 PSU W7L112 OD SI       | 9405     | 14,000/-  |
| SP781 X LED27S-6500 PSU W7L112 OD SI       | 9405     | 14,500/-  |
| SP781X LED46S-6500 PSU W7L224 OD SI        | 9405     | 30,000/-  |
| SP781X LED54S-6500 PSU W7L224 OD SI        | 9405     | 30,000/-  |
| SP781 X LED44S-6500 PSU W6L224 OD SI       | 9405     | 29,000/-  |
| SP781 X LED54S-6500 PSU W6L224 OD SI       | 9405     | 29,000/-  |
| SP781 X LED22S-6500 PSU W6L112 OD SI       | 9405     | 14,500/-  |
| SP781 X LED27S-6500 PSU W6L112 OD SI       | 9405     | 14,500/-  |
| End Plate SP780 EP60 GREY                  | 9405     | 275/-     |
| End Plate SP780 EP75 GREY                  | 9405     | 275/-     |
| ZPH780 N1000                               | 9405     | 400/-     |
| ZPH780 N1500                               | 9405     | 450/-     |
| ZPH780 N2000                               | 9405     | 500/-     |
| ZPH780 1MTR 3C 0.75sq mm Transparent cable | 9405     | 300/-     |
| ZPH780 1MTR 5C 0.75sq mm Transparent cable | 9405     | 450/-     |

CCT options: 4000K, 5700K, 6500K. Available in DALI also at INR 2000/- additional on fixed output (PSU) MRP.

### Pureline Slim Connector 60mm

Pureline Slim Family can be conjoined in multiple way like L, +, T, Y etc.

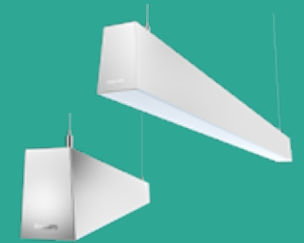


| Type                                   | HSN Code | MRP (INR)  |
|----------------------------------------|----------|------------|
| SP781X LED44S-6K PSU W6 SI L CONN 22X2 | 9405     | On request |
| SP780X LED44S-6K PSU W6 SI L CONN 22X2 | 9405     | On request |
| SP781X LED66S-6K PSU W6 SI T CONN 22X3 | 9405     | On request |
| SP780X LED66S-6K PSU W6 SI T CONN 22X3 | 9405     | On request |
| SP781X LED88S-6K PSU W6 SI P CONN 22X4 | 9405     | On request |
| SP780X LED88S-6K PSU W6 SI P CONN 22X4 | 9405     | On request |

Available in DALI also At INR 2000/- additional on fixed output (PSU) MRP.

### Pureline Taper

PureLine Taper is an elegant suspended lighting solution with taper end (bottom width of 60mm & top width of 50mm), it also has option of designer end caps which provide design inspiration through geometric patterns. Multiple option of light distribution, run lengths, color options & lumen pack for different application available.



| Type                                | HSN Code | MRP (INR) |
|-------------------------------------|----------|-----------|
| SP811P LED33S-6500 PSU W6L120 OD SI | 9405     | 15,000/-  |
| SP810P LED26S-6500 PSU W6L120 OD SI | 9405     | 12,500/-  |
| SP811X LED22S-6500 PSU W6L120 OD SI | 9405     | 15,000/-  |
| SP811X LED27S-6500 PSU W6L120 OD SI | 9405     | 15,000/-  |
| SP810X LED22S-6500 PSU W6L120 OD SI | 9405     | 12,000/-  |
| SP810X LED26S-6500 PSU W6L120 OD SI | 9405     | 12,000/-  |
| SP811P LED66S-6500 PSU W6L240 OD SI | 9405     | 30,000/-  |
| SP810P LED52S-6500 PSU W6L240 OD SI | 9405     | 24,500/-  |
| SP811X LED44S-6500 PSU W6L240 OD SI | 9405     | 30,000/-  |
| SP811X LED54S-6500 PSU W6L240 OD SI | 9405     | 30,000/-  |
| SP810X LED44S-6500 PSU W6L240 OD SI | 9405     | 25,000/-  |
| SP810X LED52S-6500 PSU W6L240 OD SI | 9405     | 25,000/-  |
| SP810 EP GR                         | 9405     | 300/-     |
| SP810 EP TAPER GR                   | 9405     | 500/-     |

CCT Options: 4000K, 5700K, 6500K. Available in DALI also at INR 2000/- additional on fixed output (PSU) MRP.





## PureLine Slim Connectors & Decorative Shapes 50mm

Recessed Mounted 50mm aluminium extruded linear fixtures to align the linear lighting layout with the office architecture or create playful environments with shapes like square, hexagon, etc. Multiple options of light distribution, run lengths and lumen packages for different application to choose from.



| Type                                    | HSN Code | MRP (INR) |
|-----------------------------------------|----------|-----------|
| SP780P LED66S-6500 PSU W5 OD WH HX CONN | 9405     | 27,000/-  |
| SP780P LED48S-6500 PSU W5 OD WH X CONN  | 9405     | 19,250/-  |
| SP780P LED44S-6500 PSU W5 OD WH SQ CONN | 9405     | 16,000/-  |
| SP780X LED48S-6500 PSU W5 OD WH + CONN  | 9405     | 24,500/-  |
| SP780P LED36S-6500 PSU W5 OD WH Y CONN  | 9405     | 14,800/-  |
| SP780X LED36S-6500 PSU W5 OD WH T CONN  | 9405     | 9,200/-   |
| SP780X LED24S-6500 PSU W5 OD WH L CONN  | 9405     | 14,000/-  |

CCT Options: 4000K, 5700K, 6500K. Available in DALI also at INR 2000/- additional on fixed output (PSU) MRP.

## PureLine

Extruded Aluminium Suspended Diffused Office Lighting Solutions with up-down light distribution, available in standalone and continuous mounting versions in 4ft & 8ft run lengths.

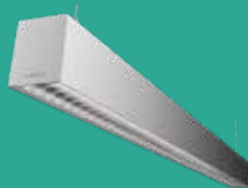


| Type                               | HSN Code | MRP (INR) |
|------------------------------------|----------|-----------|
| SP680P LED39S 6500 PSU WH L120 S1  | 9405     | 8,700/-   |
| SP680X1 LED39S 6500 PSU WH L120 S1 | 9405     | 8,700/-   |
| SP680X2 LED39S 6500 PSU WH L120 S1 | 9405     | 8,700/-   |
| SP680P LED78S 6500 PSU WH L240 S1  | 9405     | 17,000/-  |
| SP680X1 LED78S 6500 PSU WH L240 S1 | 9405     | 17,000/-  |
| SP680X2 LED78S 6500 PSU WH L240 S1 | 9405     | 17,000/-  |
| SP680P LED34S 6500 PSU WH L120 S1  | 9405     | 8,500/-   |
| SP680X1 LED34S 6500 PSU WH L120 S1 | 9405     | 8,500/-   |
| SP680X2 LED34S 6500 PSU WH L120 S1 | 9405     | 8,500/-   |
| SP680P LED68S 6500 PSU WH L240 S1  | 9405     | 16,000/-  |
| SP680X1 LED68S 6500 PSU WH L240 S1 | 9405     | 16,000/-  |
| SP680X2 LED68S 6500 PSU WH L240 S1 | 9405     | 16,000/-  |

CCT Options: 4000K, 5700K, 6500K. Available in DALI also at INR 2000/- additional on fixed output (PSU) MRP.

## PureLine Slim with Mirror Optics

Suspended aluminium extruded linear lighting luminaires with superior anodised finish and mirror optics for excellent glare control. Multiple options of light distribution, run lengths, and lumen packages for different application to choose from.



| Type                                | HSN Code | MRP (INR) |
|-------------------------------------|----------|-----------|
| SP781P LED27S-6500 PSU W6L112 C5 SI | 9405     | 17,000/-  |
| SP781P LED27S-4000 PSU W6L112 C5 SI | 9405     | 17,000/-  |
| SP780P LED26S-6500 PSU W6L112 C5 SI | 9405     | 14,000/-  |
| SP780P LED26S-4000 PSU W6L112 C5 SI | 9405     | 14,000/-  |
| SP781X LED23S-6500 PSU W6L112 C5 SI | 9405     | 17,000/-  |
| SP781X LED23S-4000 PSU W6L112 C5 SI | 9405     | 17,000/-  |
| SP780X LED22S-6500 PSU W6L112 C5 SI | 9405     | 14,000/-  |
| SP780X LED22S-4000 PSU W6L112 C5 SI | 9405     | 14,000/-  |

CCT Options: 4000K, 5700K, 6500K. Available in DALI also at INR 2000/- additional on fixed output (PSU) MRP.

## PureLine Slim Suspended 50mm

Suspended 50mm aluminium extruded linear lighting luminaires with superior white powder coated finish. Multiple options of light distribution, run lengths and lumen packages for different application to choose from.



| Type                                | HSN Code | MRP (INR) |
|-------------------------------------|----------|-----------|
| SP780P LED52S-6500 PSU W5L226 OD WH | 9405     | 13,782/-  |
| SP780P LED26S-6500 PSU W5L113 OD WH | 9405     | 6,791/-   |
| SP780X LED52S-6500 PSU W5L226 OD WH | 9405     | 19,000/-  |
| SP780X LED44S-6500 PSU W5L226 OD WH | 9405     | 13,582/-  |
| SP780X LED26S-6500 PSU W5L113 OD WH | 9405     | 9,500/-   |
| SP780X LED22S-6500 PSU W5L113 OD WH | 9405     | 6,691/-   |
| SP780X LED12S-6500 PSU W5L56 OD WH  | 9405     | 4,594/-   |

CCT Options: 4000K, 5700K, 6500K. Available in DALI also at INR 2000/- additional on fixed output (PSU) MRP.

## SmartBrite Linear

SmartBright Linear provides an extremely durable and high efficacy yet cost effective linear solution surface mounted and suspended applications like offices, retail stores, metro stations, etc.



| Type                            | HSN Code | MRP (INR) |
|---------------------------------|----------|-----------|
| SP095V LED40S 865 W7L120 PSU WH | 9405     | 6,000/-   |
| SP095V LED26S 865 W7L120 PSU WH | 9405     | 5,500/-   |

CCT Options of 5700K and 4000K at the same MRP. DALI option available on request at INR 2000/- additional on MRP.

## SmartBrite Surface

Low height general purpose suspended/surface mounted LED luminaire with diffused optics offering perfect illumination for indoor space.



| Type                       | HSN Code | MRP (INR) |
|----------------------------|----------|-----------|
| SM270C LED 30S 6500 PSU WH | 9405     | 5,500/-   |
| SM270C LED 30S 4000 PSU WH | 9405     | 5,500/-   |

CCT Options - 4000K, 6500K.

## Cirrus Surface

Surface Mounted general purpose square shaped luminaire with low height CRCA housing and high transmittivity diffuser suitable for office application. Available in options of white & grey housing with profiled & flat diffuser.



| Type                        | HSN Code | MRP (INR) |
|-----------------------------|----------|-----------|
| SM365C LED32-6500 PSU OD GR | 9405     | 5,500/-   |
| SM365C LED32-6500 PSU OD WH | 9405     | 5,500/-   |
| SM366C LED32-6500 PSU OD GR | 9405     | 5,500/-   |
| SM366C LED32-6500 PSU OD WH | 9405     | 5,500/-   |

CCT Options - 4000K, 6500K.

## Cirrus Mini Pro

Cirrus Mini Pro is a general lighting application luminaire (with a dimension of 312mm X 312mm), a perfect solution for all surface mount indoor general lighting application.



| Type                         | HSN Code | MRP (INR) |
|------------------------------|----------|-----------|
| SM200C LED16S 6500 PSU OD WH | 9405     | 3,100/-   |
| SM200C LED15S 4000 PSU OD WH | 9405     | 3,100/-   |
| SM200C LED11S 6500 PSU OD WH | 9405     | 2,450/-   |
| SM200C LED10S 4000 PSU OD WH | 9405     | 2,450/-   |

CCT Options - 4000K, 6500K.







## Recessed Mounted Luminaires

### DaySpace Recessed

DaySpace is a unique 2'X2' LED luminaire suitable for grid ceiling. With options of using the false ceiling tile or back plate of users choice the fixture seamlessly blends into the office environment/architecture and also declutters the ceiling with its unique design.

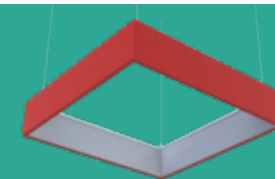


| Type                            | HSN Code | MRP (INR) |
|---------------------------------|----------|-----------|
| RC740B LED25S/865 W60L60 PSU WH | 9405     | 13,500/-  |
| RC740B LED30S/865 W60L60 PSU WH | 9405     | 14,500/-  |
| RC740B LED36S/865 W60L60 PSU WH | 9405     | 15,500/-  |
| RC740B LED25S/865 W60L60 PSD WH | 9405     | 19,000/-  |
| RC740B LED30S/865 W60L60 PSD WH | 9405     | 20,000/-  |
| RC740B LED36S/865 W60L60 PSD WH | 9405     | 21,000/-  |

BP740 L60W60 WH - White Back Plate as an optional additional accessory. CCT Options - 4000K, 6500K, 5700K. Available in DALI also At INR 2000/- additional on fixed output (PSU) MRP.

### DaySpace Suspended

DaySpace is a unique 2'X2' LED luminaire suitable for grid ceiling. With options of using the false ceiling tile or back plate of users choice the fixture seamlessly blends into the office environment/architecture and also declutters the ceiling with its unique design.

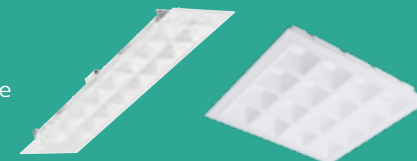


| Type                            | HSN Code | MRP (INR) |
|---------------------------------|----------|-----------|
| SP740B LED25S/865 W60L60 PSU WH | 9405     | 17,000/-  |
| SP740B LED30S/865 W60L60 PSU WH | 9405     | 18,000/-  |
| SP740B LED36S/865 W60L60 PSU WH | 9405     | 19,000/-  |
| SP740B LED25S/865 W60L60 PSD WH | 9405     | 22,000/-  |
| SP740B LED30S/865 W60L60 PSD WH | 9405     | 23,000/-  |
| SP740B LED36S/865 W60L60 PSD WH | 9405     | 24,000/-  |

CCT options: 4000K, 6500K, 5700K. Available in DALI also at INR 2000/- additional on fixed output (PSU) MRP.

### PowerBalance

Aluminium extruded recessed luminaire with 135mm diffused compartment available both in standalone & continuous options suitable for armstrong techzone ceiling.



| Type                                | HSN Code | MRP (INR) |
|-------------------------------------|----------|-----------|
| RC600B M LED25S-6500 PSU W30L120 WH | 9405     | 11,500/-  |
| RC600B M LED30S-6500 PSU W30L120 WH | 9405     | 12,000/-  |
| RC600B M LED40S-6500 PSU W30L120 WH | 9405     | 12,500/-  |
| RC600B M LED25S-6500 PSD W30L120 WH | 9405     | 14,000/-  |
| RC600B M LED30S-6500 PSD W30L120 WH | 9405     | 14,500/-  |
| RC600B M LED40S-6500 PSD W30L120 WH | 9405     | 15,200/-  |
| RC600B M LED25S-6500 PSU W60L60 WH  | 9405     | 11,000/-  |
| RC600B M LED30S-6500 PSU W60L60 WH  | 9405     | 11,500/-  |
| RC600B M LED40S-6500 PSU W60L60 WH  | 9405     | 12,000/-  |
| RC600B M LED25S-6500 PSD W60L60 WH  | 9405     | 14,500/-  |
| RC600B M LED30S-6500 PSD W60L60 WH  | 9405     | 15,000/-  |
| RC600B M LED40S-6500 PSD W60L60 WH  | 9405     | 15,500/-  |

CCT Options - 4000K, 6500K. Available in DALI also at INR 2000/- additional on fixed output (PSU) MRP. IAO and POE options also available on request.

## WingLine

Recessed mounted general purpose square shaped luminaire with high transmittivity diffuser suitable for office application. Available in options of white & grey housing with profiled & flat diffuser.



| Type                            | HSN Code | MRP (INR) |
|---------------------------------|----------|-----------|
| RC480B LED25S/865 W60L60 PSU WH | 9405     | 4,800/-   |
| RC480B LED30S/865 W60L60 PSU WH | 9405     | 4,800/-   |

CCT Options - 4000K, 6500K. Available in DALI also at INR 2000/- additional on fixed output (PSU) MRP. IAO and IAP options also available on request.

## CoreView

A unique recessed mounted 2'X2' LED luminaire suitable for grid ceiling with 100% indirect lighting, delivering soft and uniform light for excellent visual comfort.



| Type                          | HSN Code | MRP (INR) |
|-------------------------------|----------|-----------|
| RC 420B M LED 30S 6500 PSU WH | 9405     | 6,000/-   |
| RC 420B M LED 34S 6500 PSU WH | 9405     | 6,500/-   |
| RC 420B M LED 30S 6500 PSD WH | 9405     | 7,000/-   |
| RC 420B M LED 34S 6500 PSD WH | 9405     | 7,500/-   |

CCT Options: 4000K, 5700K, 6500K. Available in DALI also at INR 2000/- additional on fixed output (PSU) MRP.

## FullGlow G5

Fully diffused recessed mounted 2'X2' LED luminaire with high transmittive diffuser suitable for indoor spaces.



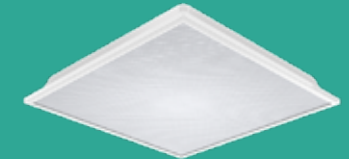
| Type                                | HSN Code | MRP (INR) |
|-------------------------------------|----------|-----------|
| RC380B LED25S-6500 G5 L60W60 PSU OD | 9405     | 4,000/-   |
| RC380B LED30S-6500 G5 L60W60 PSU OD | 9405     | 4,400/-   |
| RC380B LED36S-6500 G5 L60W60 PSU OD | 9405     | 4,800/-   |
| RC380B LED42S-6500 G5 L60W60 PSU OD | 9405     | 5,200/-   |
| RC380B LED25S-6500 G5 L60W60 PSD OD | 9405     | 9,500/-   |
| RC380B LED30S-6500 G5 L60W60 PSD OD | 9405     | 10,000/-  |
| RC380B LED36S-6500 G5 L60W60 PSD OD | 9405     | 10,500/-  |
| RC380B LED42S-6500 G5 L60W60 PSD OD | 9405     | 12,000/-  |

CCT Options: 4000K, 5700K, 6500K. Available in DALI also at INR 2000/- additional on fixed output (PSU) MRP. IA, IAO, Step Smart, POE and Tunable White options also available on request.



## SoftGlow

Office compliant fully diffused recessed mounted 2'X2' LED Troffer with microprismatic diffuser suitable for indoor spaces



| Type                                    | HSN Code | MRP (INR) |
|-----------------------------------------|----------|-----------|
| RC380B LED36S-6500 G5 L60W60 PSU OD SG  | 9405     | 5,800/-   |
| RC380B LED30S-6500 G5 L60W60 PSU OD SG  | 9405     | 5,600/-   |
| RC380B LED36S-6500 G5 L60 W60 PSD OD OC | 9405     | 9,000/-   |

CCT Options: 4000K, 5700K, 6500K. Available in DALI also at INR 2000/- additional on fixed output (PSU) MRP.

## SmartGlow

SmartGlow is an intelligent office lighting recessed luminaire with built in PIR occupancy sensor offering flexibility of auto switching off when the space is not occupied.



| Type                              | HSN Code | MRP (INR) |
|-----------------------------------|----------|-----------|
| RC383B LED 36S-6500 PSU OD WH PIR | 9405     | 6,000/-   |
| RC383B LED 28S-6500 PSU OD WH PIR | 9405     | 6,000/-   |
| RC383B LED 36S-4000 PSU OD WH PIR | 9405     | 6,000/-   |
| RC383B LED 28S-4000 PSU OD WH PIR | 9405     | 6,000/-   |

Available in DALI also at INR 2000/- additional on fixed output (PSU) MRP.



## PureLine TechZone G2

Pureline Techzone is offered in two versions suitable for 150mm & 100mm technical zones. Sturdy extruded Aluminum housing with Sliding PC diffuser offering uniform lighting distribution. CRCA end Caps and external gear for ease of maintenance.



| Type                                 | HSN Code | MRP (INR) |
|--------------------------------------|----------|-----------|
| RC810B LED26S 6500 PSU W10L120 OD WH | 9405     | 7,900/-   |
| RC810B LED30S 6500 PSU W10L120 OD WH | 9405     | 7,900/-   |
| RC810X LED20S 6500 PSU W10L120 OD WH | 9405     | 7,900/-   |
| RC810B LED52S 6500 PSU W10L240 OD WH | 9405     | 15,300/-  |
| RC810X LED40S 6500 PSU W10L240 OD WH | 9405     | 15,800/-  |
| RC810B LED26S 6500 PSU W15L120 OD WH | 9405     | 9,100/-   |
| RC810B LED30S 6500 PSU W15L120 OD WH | 9405     | 9,100/-   |
| RC810X LED20S 6500 PSU W15L120 OD WH | 9405     | 9,100/-   |
| RC810B LED52S 6500 PSU W15L240 OD WH | 9405     | 18,200/-  |
| RC810X LED40S 6500 PSU W15L240 OD WH | 9405     | 18,500/-  |

### Accessories

|                                  |  |       |
|----------------------------------|--|-------|
| RC810 W10 ENDPLATE               |  | 250/- |
| RC810 W15 ENDPLATE               |  | 350/- |
| RC810 W10L120 ACCESSORY DIFFUSER |  | 300/- |
| RC810 W10L240 ACCESSORY DIFFUSER |  | 350/- |
| RC810 W15L120 ACCESSORY DIFFUSER |  | 450/- |
| RC810 W15L240 ACCESSORY DIFFUSER |  | 500/- |

CCT options: 4000K, 5700K and 6500K. Available in DALI also at INR 2000/- additional on fixed output (PSU) MRP. Interact Office, Interact Pro and POE options also available on request.

## PureLine TechZone

Aluminium extruded recessed luminaire with 135mm diffused compartment available both in standalone & continuous options suitable for armstrong techzone ceiling.



| Type                                  | HSN Code | MRP (INR) |
|---------------------------------------|----------|-----------|
| RC820B LED 26S 6500 PSU W15L120 OD SI | 9405     | 8,000/-   |
| RC820B LED 26S 4000 PSU W15L120 OD SI | 9405     | 8,000/-   |
| RC820B LED 52S 4000 PSU W15L240 OD SI | 9405     | 16,000/-  |
| RC820B LED 52S 4000 PSU W15L240 OD SI | 9405     | 16,000/-  |

CCT Options: 4000K, 6500K. Available in DALI also at INR 2000/- additional on fixed output (PSU) MRP. Microprismatic Diffuser also available on request at additional price.

## PureLine Slim Recessed 60mm/ 75mm

Recessed 60mm/75mm width aluminium extruded linear lighting luminaires with superior anodised aluminium finish. Multiple options of light distribution, run lengths and lumen packages for different application to choose from.



| Type                                | HSN Code | MRP (INR) |
|-------------------------------------|----------|-----------|
| RC780B LED52S-6500 PSU W7L240 OD SI | 9405     | 23,000/-  |
| RC780B LED52S-6500 PSU W6L240 OD SI | 9405     | 22,000/-  |
| RC780X LED44S-6500 PSU W7L240 OD SI | 9405     | 23,000/-  |
| RC780X LED44S-6500 PSU W6L240 OD SI | 9405     | 22,000/-  |
| RC780B LED26S-6500 PSU W7L120 OD SI | 9405     | 11,700/-  |
| RC780B LED26S-6500 PSU W6L120 OD SI | 9405     | 11,200/-  |
| RC780X LED22S-6500 PSU W7L120 OD SI | 9405     | 11,700/-  |
| RC780X LED22S-6500 PSU W6L120 OD SI | 9405     | 11,000/-  |
| RC780 EP60 Grey                     | 9405     | 250/-     |
| RC780 EP75 Grey                     | 9405     | 250/-     |

CCT Options - 4000K, 5700K, 6500K. Available in DALI also at INR 2000/- additional on fixed output (PSU) MRP. PSD (DALI), IAO, TWH & POE options also available on request.

## PureLine Slim Recessed 50mm

Recessed Mounted 50mm aluminium extruded linear lighting luminaires with superior white powder coated finish. Multiple options of light distribution, run lengths and lumen packages for different application to choose from.



| Type                                | HSN Code | MRP (INR) |
|-------------------------------------|----------|-----------|
| RC780B LED52S-6500 PSU W5L226 OD WH | 9405     | 15,000/-  |
| RC780B LED26S-6500 PSU W5L113 OD WH | 9405     | 7,800/-   |
| RC780X LED12S-6500 PSU W5L56 OD WH  | 9405     | 4,800/-   |
| RC780X LED22S-6500 PSU W5L113 OD WH | 9405     | 7,600/-   |
| RC780X LED26S-6500 PSU W5L113 OD WH | 9405     | 7,700/-   |
| RC780X LED44S-6500 PSU W5L226 OD WH | 9405     | 14,600/-  |
| RC780X LED52S-6500 PSU W5L226 OD WH | 9405     | 14,700/-  |

CCT Options: 4000K, 5700K, 6500K. Available in DALI also at INR 2000/- additional on fixed output (PSU) MRP.

## FullGlow 1'x4'

Fully diffused recessed mounted 1'X4' LED luminaire with high transmittive diffuser suitable for indoor spaces.



| Type                               | HSN Code | MRP (INR) |
|------------------------------------|----------|-----------|
| RC380B LED30S-6500 G5 L3W12 PSU OD | 9405     | 6,500/-   |
| RC380B LED36S-6500 G5 L3W12 PSU OD | 9405     | 7,500/-   |
| RC380B LED43S-6500 G5 L3W12 PSU OD | 9405     | 8,500/-   |

CCT options: 4000K, 6500K, 5700K. Available in DALI also at INR 2000/- additional on fixed output (PSU) MRP.

## GreenSquare

General purpose recessed mounted 2'X2' LED luminaire with central light exit and profiled CRCA housing for better and soothing light distribution.



| Type                         | HSN Code | MRP (INR) |
|------------------------------|----------|-----------|
| RC140B LED30S-6500 PSU WH OD | 9405     | 4,400/-   |
| RC140B LED30S-4000 PSU WH OD | 9405     | 4,400/-   |
| RC140B LED30S-6500 PSD WH OD | 9405     | 5,400/-   |
| RC140B LED30S-4000 PSD WH OD | 9405     | 5,400/-   |
| RC140B LED30S-6500 PSR WH OD | 9405     | 5,400/-   |
| RC140B LED30S-4000 PSR WH OD | 9405     | 5,400/-   |

## Cirrus

Recessed mounted general purpose square shaped luminaire with high transmittivity diffuser suitable for office application. Available in options of white & grey housing with profiled & flat diffuser.



| Type                        | HSN Code | MRP (INR) |
|-----------------------------|----------|-----------|
| LED33-6500 PSU OD GR        | 9405     | 4,800/-   |
| LED33-6500 PSU OD WH        | 9405     | 4,800/-   |
| RC366B LED33-6500 PSU OD GR | 9405     | 4,800/-   |
| RC366B LED33-6500 PSU OD WH | 9405     | 4,800/-   |

CCT Options - 4000K, 6500K



Indoor Commercial Commercial Battens

## Commercial Battens

### SmartBright

Extruded Aluminium batten available in 2ft & 4ft run length with multiple lumen packages and suitable for Surface, Wall & Conduit mounting (with accessories).



| Type                              | HSN Code | MRP (INR) |
|-----------------------------------|----------|-----------|
| BN 021 LED12S 6500 PSU GR         | 9405     | 570/-     |
| BN021C LED22S PSU CW GR           | 9405     | 850/-     |
| BN 021 LED40S- 6500 PSU GR (4 ft) | 9405     | 1,499/-   |

Also available in 4000K

### Smartbrite Xtra

Extruded Aluminium batten for continuous operation and available in 4ft run length, suitable for Surface, Wall & Conduit mounting (with accessories).



| Type                           | HSN Code | MRP (INR) |
|--------------------------------|----------|-----------|
| BN100C LED40S-6500 PSU L120 GR | 9405     | 1,800/-   |

Also available in 4000K



## Downlighters & Spot Lights

### GreenSpace Flex

GreenSpace Flex is a modular range of downlighters, with extremely low glare (UGR <19). The range is available in Narrow (15°), Medium (24°) & Wide Beam (38°) optics, suitable for different applications & ceiling heights.



| Type                        | HSN Code | MRP (INR) |
|-----------------------------|----------|-----------|
| <b>Trims</b>                |          |           |
| RS378Z M102 D150 R-R AJU    |          | 4,500/-   |
| RS378Z M87 D130 R-R AJ D    |          | 4,000/-   |
| RS378Z M87 D110 R-R FX D    |          | 2,700/-   |
| RS378Z M87 D130 R-R AJ      |          | 3,600/-   |
| RS378Z M70 D110 R-R AJ D    |          | 3,400/-   |
| RS378Z M70 D90 R-R FX D     |          | 2,000/-   |
| RS378Z M70 D110 R-R AJ      |          | 3,100/-   |
| RS378Z M55 D60 R-R FX       |          | 1,400/-   |
| RS378Z M55 D75 R-R FX       |          | 1,500/-   |
| RS378Z M55 D75 R-U AJ       |          | 1,500/-   |
| RS378Z M55 D75 R-R AJ PH    |          | 1,500/-   |
| RS378Z M55 D75 R-R FX PH    |          | 1,600/-   |
| RS378Z M55 D75 R-R FX SPH   |          | 1,600/-   |
| RS378Z M55 D75 S-S FX WP    |          | 1,600/-   |
| RS378Z M55 D70 R-R AJ       |          | 1,600/-   |
| RS378Z M55 D75 S-U AJ       |          | 1,600/-   |
| RS378Z M55 D75 S-S FX       |          | 1,600/-   |
| RS378Z M55 D70 S-R AJ       |          | 1,700/-   |
| RS378Z M55 D75 R-R AJ Trim  |          | 1,700/-   |
| RS378Z M55 D75 R-U AJ Trim  |          | 1,700/-   |
| RS378Z M55 D75 R-R FX PH WP |          | 1,500/-   |
| RS378Z M55 D75 R-R AJ       |          | 1,800/-   |
| RS378Z M55 D90 R-R AJ       |          | 2,000/-   |
| RS378Z M55 D90 S-R AJ       |          | 2,000/-   |
| RS378Z M55 D85 R-R AJ       |          | 2,300/-   |
| RS378Z M55 D95 R-R AJ       |          | 2,400/-   |
| RS378Z M55 D95 R-R AJ D     |          | 2,500/-   |
| RS378Z M55 D78 S-S AJ D     |          | 2,800/-   |
| RS378Z M55 D78 R-R AJ D     |          | 2,800/-   |
| RS378Z M55 D78 R-R FX D     |          | 2,800/-   |
| RS378Z M55 D92 R-R AJ D     |          | 3,200/-   |
| RS378Z M55 D92 R-R FX D     |          | 3,200/-   |

Also available in 4000K

| Type                      | HSN Code | MRP (INR) |
|---------------------------|----------|-----------|
| <b>Trims</b>              |          |           |
| RS378Z M55 D102 R-R AJ D  |          | 3,500/-   |
| RS378Z M55 D102 R-R FX D  |          | 3,600/-   |
| RS378B MR16 D102 R-R AJ D |          | 4,100/-   |
| RS378B MR16 D102 R-R FX D |          | 4,100/-   |
| RS378B MR16 D78 R-R AJ D  |          | 3,700/-   |
| RS378B MR16 D78 R-R FX D  |          | 3,700/-   |
| RS378B MR16 D78 S-S AJ D  |          | 3,300/-   |
| RS378B MR16 D92 R-R AJ D  |          | 3,400/-   |
| RS378B MR16 D92 R-R FX D  |          | 3,300/-   |

| Type                       | HSN Code | MRP (INR) |
|----------------------------|----------|-----------|
| <b>LED Modules</b>         |          |           |
| RS378B P6 927 PSU-E MB M55 |          | 3,000/-   |
| RS378B P6 927 PSU-E NB M55 |          | 3,700/-   |
| RS378B P6 927 PSU-E WB M55 |          | 4,800/-   |
| RS378B P6 930 PSU-E MB M55 |          | 7,000/-   |
| RS378B P6 930 PSU-E NB M55 |          | 7,800/-   |
| RS378B P6 930 PSU-E WB M55 |          | 9,800/-   |

Nomenclature for LED Modules Pxy=xy Watts (P6=6W). CCT Options of 2700K, 3000K & 4000K available with 90CRI in all LED modules. Options of NB, MB and WB available in all LED modules

### LuxSpace Pro

LuxSpace Pro is a deep recessed downlighter range with extremely low glare (UGR <19) & high quality faceted reflector for superior lighting and aesthetics. The range is available in Medium (32°) & Wide Beam (65°) optics for both standard and high ceiling applications.



| Type                           | HSN Code | MRP (INR) |
|--------------------------------|----------|-----------|
| DN590B M LED6S-6500 PSU WH WB  |          | 4,000/-   |
| DN590B M LED6S-6500 PSU WH MB  |          | 4,000/-   |
| DN590B M LED10S-6500 PSU WH WB |          | 4,000/-   |
| DN590B M LED10S-6500 PSU WH MB |          | 4,000/-   |
| DN590B M LED15S-6500 PSU WH WB |          | 4,000/-   |
| DN590B M LED15S-6500 PSU WH MB |          | 4,000/-   |
| DN590B M LED20S-6500 PSU WH WB |          | 4,000/-   |
| DN590B M LED20S-6500 PSU WH MB |          | 4,000/-   |

CCT Options - 3000K, 4000K, 5700K & 6500K. Available in DALI also at INR 3500/- additional on fixed output (PSU) MRP. MB and WB options available for all lumen packs. Tunable White, Interact Pro, POE and IP54 options also available on request.

## GreenPerform Sleek

GreenPerform Sleek is a high performance low-height LED downlighter suited for requirements of any modern professional workspace. Robust PDC housing ensures long system. Narrow rim renders a pleasing aesthetic look.



| Type                      | HSN Code | MRP (INR) |
|---------------------------|----------|-----------|
| DN295B LED6S-6500 PSU WH  | 9405     | 1,400/-   |
| DN295B LED8S-6500 PSU WH  | 9405     | 1,550/-   |
| DN295B LED10S-6500 PSU WH | 9405     | 1,700/-   |
| DN296B LED12S-6500 PSU WH | 9405     | 2,100/-   |
| DN296B LED15S-6500 PSU WH | 9405     | 2,500/-   |
| DN296B LED20S-6500 PSU WH | 9405     | 3,000/-   |

CCT Options: 4000K, 5700K, 3000K. Available in DALI also At INR 3500/- additional on fixed output (PSU) MRP. Office Compliant variant with UGR<19 - Soft Glow (SG). (MRP-INR 500/- additional for SG Option)

## Sleek Surface Downlight

Slim profile surface mounted downlight with options of 700 to 2000 lumen.



| Type                       | HSN Code | MRP (INR) |
|----------------------------|----------|-----------|
| SM250C LED7S- 6500 PSU WH  | 9405     | 1,100/-   |
| SM250C LED12S- 6500 PSU WH | 9405     | 1,200/-   |
| SM251C LED16S- 6500 PSU WH | 9405     | 1,750/-   |
| SM250C LED12S- 6500 PSU WH | 9405     | 1,200/-   |
| SM251C LED20S- 6500 PSU WH | 9405     | 1,950/-   |

Available in Round and Square form factors in 3000K and 4000K.

## ArchSpace

ArchSpace is the perfect choice when it comes to surface and suspended cylindrical downlighting applications such as those in Retail, Offices, Hotels, Lobbies and School/ Universities etc. With its differentiated aesthetics with extruded aluminium housing and a superior powder coated finish, multiple choices of lumen packs, two diameters, flexible height\*, uniform lighting distribution and superior features of Driver make ArchSpace an undisputed winner when it comes to the surface/ cylindrical downlight category.



| Type                             | HSN Code | MRP (INR) |
|----------------------------------|----------|-----------|
| SP320P LED6S-6500 PSU DIA100 WH  |          | 4,100/-   |
| SP320P LED10S-6500 PSU DIA100 WH |          | 4,300/-   |
| SP320P LED15S-6500 PSU DIA100 WH |          | 4,600/-   |
| SP320P LED20S-6500 PSU DIA100 WH |          | 4,800/-   |
| SP320P LED6S-6500 PSU DIA80 WH   |          | 3,800/-   |
| SP320P LED10S-6500 PSU DIA80 WH  |          | 4,100/-   |
| SP320P LED15S-6500 PSU DIA80 WH  |          | 4,300/-   |
| SP320P LED20S-6500 PSU DIA80 WH  |          | 4,600/-   |

Available in black housing color at the same MRP. Available in CCT options of 3000K, 4000K and 6500K at the same MRP

## GreenLED Ultima Square

Ultra sleek recessed downlight for low height false ceiling in square profile.



| Type                      | HSN Code | MRP (INR) |
|---------------------------|----------|-----------|
| DN096B LED6S-6500 PSU WH  | 9405     | 1,580/-   |
| DN097B LED10S-6500 PSU WH | 9405     | 1,980/-   |

Also available in 3000K and 4000K

## GreenLED Ultima Round

Ultra sleek recessed downlight for low height false ceiling in round profile.



| Type                      | HSN Code | MRP (INR) |
|---------------------------|----------|-----------|
| DN091B LED6S-6500 PSU WH  | 9405     | 1,580/-   |
| DN092B LED10S-6500 PSU WH | 9405     | 1,980/-   |

Also available in 3000K and 4000K



## SkySpot COB

- New series of LED Spot fixtures specially designed for commercial use
- Ideal for retail showrooms, hospitality, offices
- Elegant fixed spot with a focused 36 degree beam angle
- Long life with 30,000 burning hours with CRI>80
- Wide choice: Available in 7/12/18/22W, Round, 3000K & 6500K



| Type                  | HSN Code | MRP (INR) |
|-----------------------|----------|-----------|
| 7W Sky Spot COB (WW)  | 9405     | 1,415/-   |
| 7W Sky Spot COB (CW)  | 9405     | 1,415/-   |
| 12W Sky Spot COB (WW) | 9405     | 1,415/-   |
| 12W Sky Spot COB (CW) | 9405     | 1,765/-   |
| 18W Sky Spot COB (WW) | 9405     | 1,765/-   |
| 18W Sky Spot COB (CW) | 9405     | 1,765/-   |
| 22W Sky Spot COB (WW) | 9405     | 2,200/-   |
| 22W Sky Spot COB (CW) | 9405     | 2,200/-   |

## Green LED I

- High performance LED Downlights for commercial applications
- 100 lumen / watt efficacy
- Efficient heat sink (die cast) with Steel clips
- Integrated driver control (for easy installation)



| Type                         | HSN Code | MRP (INR) |
|------------------------------|----------|-----------|
| DN191B LED6S-3000 PSU WH S2  | 9405     | 1,415/-   |
| DN191B LED6S-4000 PSU WH S2  | 9405     | 1,415/-   |
| DN191B LED6S-6500 PSU WH S2  | 9405     | 1,415/-   |
| DN192B LED10S-3000 PSU WH S2 | 9405     | 1,765/-   |
| DN192B LED10S-4000 PSU WH S2 | 9405     | 1,765/-   |
| DN192B LED10S-6500 PSU WH S2 | 9405     | 1,765/-   |
| DN193B LED12S-3000 PSU WH S2 | 9405     | 2,200/-   |
| DN193B LED12S-4000 PSU WH S2 | 9405     | 2,200/-   |
| DN193B LED12S-6500 PSU WH S2 | 9405     | 2,200/-   |
| DN194B LED16S-3000 PSU WH S2 | 9405     | 2,750/-   |
| DN194B LED16S-4000 PSU WH S2 | 9405     | 2,750/-   |
| DN194B LED16S-6500 PSU WH S2 | 9405     | 2,750/-   |
| DN195B LED20S-3000 PSU WH S2 | 9405     | 3,300/-   |
| DN195B LED20S-4000 PSU WH S2 | 9405     | 3,300/-   |
| DN195B LED20S-6500 PSU WH S2 | 9405     | 3,300/-   |



## Track & Spot Lights

### Style State Track

Track mounted accent lighting luminaire with no external gear box and magnetic hinge arrangement for easy aiming and perfect punch in the beam.



| Type                             | HSN Code | MRP (INR) |
|----------------------------------|----------|-----------|
| ST916T LED20/940 PSU 1C MB BK IN | 9405     | 15,000/-  |
| ST916T LED20/940 PSU 1C NB BK IN | 9405     | 15,000/-  |
| ST916T LED20/940 PSU 1C WB BK IN | 9405     | 15,000/-  |



## EcoAccent Track

Track mounted accent lighting luminaire in pressure diecast housing with two options of lumen pack. Track of 1M and 2M available to be ordered separately.



| Type                            | HSN Code | MRP (INR) |
|---------------------------------|----------|-----------|
| ST271T LED20/830 PSU-E NB 1C BK | 9405     | 6,500/-   |
| ST271T LED20/830 PSU-E MB 1C BK | 9405     | 6,500/-   |
| ST271T LED20/830 PSU-E WB 1C BK | 9405     | 6,500/-   |
| ST271T LED20/840 PSU-E MB 1C BK | 9405     | 6,500/-   |
| ST271T LED20/850 PSU-E MB 1C BK | 9405     | 6,500/-   |
| ST271T LED20/830 PSU-E MB 1C WH | 9405     | 6,500/-   |
| ST271T LED20/840 PSU-E MB 1C WH | 9405     | 6,500/-   |
| ST271T LED20/840 PSU-E WB 1C BK | 9405     | 6,500/-   |
| ST271T LED20/850 PSU-E WB 1C BK | 9405     | 6,500/-   |
| ST271T LED20/840 PSU-E NB 1C BK | 9405     | 6,500/-   |
| ST271T LED40/830 PSU-E NB 1C BK | 9405     | 7,000/-   |
| ST271T LED40/830 PSU-E WB 1C BK | 9405     | 7,000/-   |
| ST271T LED40/840 PSU-E NB 1C BK | 9405     | 7,000/-   |
| ST271T LED40/840 PSU-E MB 1C BK | 9405     | 7,000/-   |
| ST271T LED40/840 PSU-E WB 1C BK | 9405     | 7,000/-   |
| ST271T LED40/850 PSU-E MB 1C BK | 9405     | 7,000/-   |
| ST271T LED40/850 PSU-E WB 1C BK | 9405     | 7,000/-   |
| ST271T LED40/840 PSU-E MB 1C WH | 9405     | 7,000/-   |
| ST271T LED40/830 PSU-E MB 1C WH | 9405     | 7,000/-   |
| ST271T LED40/850 PSU-E NB 1C BK | 9405     | 7,000/-   |

## Essential Smart Bright Track Lights

Essential SmartBright Track Light range is a high performance, hassle free solution for up to 5 years of use. Range has high efficacy of up to 100 lm/W, and Aluminum housing for better thermal management. Available in black & white color housing.



| Type                                  | HSN Code | MRP (INR) |
|---------------------------------------|----------|-----------|
| ST030T LED8/830 8W 220-240V I MB WH   |          | 1,750/-   |
| ST030T LED8/830 8W 220-240V I NB WH   |          | 1,750/-   |
| ST030T LED12/830 14W 220-240V I MB WH |          | 2,000/-   |
| ST030T LED12/830 14W 220-240V I NB WH |          | 2,000/-   |
| ST030T LED20/830 23W 220-240V I MB WH |          | 2,250/-   |
| ST030T LED20/830 23W 220-240V I NB WH |          | 2,250/-   |
| ST030T LED30/830 35W 220-240V I MB WH |          | 2,500/-   |
| ST030T LED30/830 35W 220-240V I NB WH |          | 2,500/-   |

CCT Options: 4000K, 5000K, 3000K. Color Options - White, Black.

## TrueFashion Tracks

TrueFashion is a dedicated spot family answering to the specific needs of Fashion retailers. These miniaturized spots with clean and fine detailing offer contemporary design and blend seamlessly into the store interior. TrueFashion provides the best quality of light by using lenses to optimize the contrasts within the store.



| Type                                  | HSN Code | MRP (INR) |
|---------------------------------------|----------|-----------|
| ST700T LED10 930PW PSD VLC NB WH IN   | 9405     | 18,500/-  |
| ST700T LED20 940PW PSD VLC MB WH IN   | 9405     | 18,500/-  |
| ST700T LED20 930PC PSU NB 1C WH IN    | 9405     | 7,900/-   |
| ST700T LED20 930PC PSU MB 1C WH IN    | 9405     | 7,900/-   |
| ST700T LED20 930PC PSU WB 1C WH IN    | 9405     | 7,900/-   |
| ST700T LED30 930PC PSU MB 1C WH IN    | 9405     | 9,600/-   |
| ST700T LED30 930PC PSU WB 1C WH IN    | 9405     | 9,600/-   |
| ST700T LED40 930PC PSU MB 1C WH IN    | 9405     | 10,000/-  |
| ST700T LED40 930PC PSU WB 1C WH IN    | 9405     | 10,000/-  |
| ST700T LED20 930PC PSU MB 1C WH HB IN | 9405     | 7,900/-   |
| ST700T LED40 930PC PSU MB 1C WH HB IN | 9405     | 11,000/-  |
| ST700T LED30 930PW PSU MB 3C WH IN    | 9405     | 9,000/-   |
| ST700T LED30 930PW PSU WB 3C WH IN    | 9405     | 9,000/-   |
| ST700T LED30 930PW PSD VLC MB WH IN   | 9405     | 18,500/-  |
| ST700T LED30 930PW PSD VLC WB WH IN   | 9405     | 18,500/-  |
| ST700T LED10 930PC PSU NB 1C WH IN    | 9405     | 8,400/-   |
| ST700T LED10 930PC PSU MB 1C WH IN    | 9405     | 8,400/-   |
| ST700T LED10 930PC PSU WB 1C WH IN    | 9405     | 8,400/-   |

Housing color options of white and black. DALI and VLC options also for specific SKUs

## EcoAccent

Recessed mounted Accent Lighting luminaire with diecast aluminum heat sink and sand grain finishing reflector, available in two lumen packs with option of DALI dimmable driver.



| Type                         | HSN Code | MRP (INR) |
|------------------------------|----------|-----------|
| RS271B LED20/830 PSU-E NB WH | 9405     | 6,500/-   |
| RS271B LED20/830 PSU-E MB WH | 9405     | 6,500/-   |
| RS271B LED20/830 PSU-E WB WH | 9405     | 6,500/-   |
| RS271B LED20/840 PSU-E NB WH | 9405     | 6,500/-   |
| RS271B LED20/840 PSU-E MB WH | 9405     | 6,500/-   |
| RS271B LED20/840 PSU-E WB WH | 9405     | 6,500/-   |
| RS271B LED20/850 PSU-E NB WH | 9405     | 6,500/-   |
| RS271B LED20/850 PSU-E MB WH | 9405     | 6,500/-   |
| RS271B LED20/850 PSU-E WB WH | 9405     | 6,500/-   |
| RS271B LED40/830 PSU-E MB WH | 9405     | 6,500/-   |
| RS271B LED40/830 PSU-E WB WH | 9405     | 6,500/-   |
| RS271B LED40/840 PSU-E MB WH | 9405     | 6,500/-   |
| RS271B LED40/840 PSU-E WB WH | 9405     | 6,500/-   |
| RS271B LED40/850 PSU-E MB WH | 9405     | 6,500/-   |
| RS271B LED40/850 PSU-E WB WH | 9405     | 6,500/-   |
| RS271B LED20/850 PSD NB WH   | 9405     | 7,500/-   |
| RS271B LED20/840 PSD NB WH   | 9405     | 7,500/-   |
| RS271B LED20/830 PSD NB WH   | 9405     | 7,500/-   |
| RS271B LED20/850 PSD MB WH   | 9405     | 7,500/-   |
| RS271B LED20/840 PSD MB WH   | 9405     | 7,500/-   |
| RS271B LED20/830 PSD MB WH   | 9405     | 7,500/-   |
| RS271B LED20/850 PSD WB WH   | 9405     | 7,500/-   |
| RS271B LED20/840 PSD WB WH   | 9405     | 7,500/-   |
| RS271B LED20/830 PSD WB WH   | 9405     | 7,500/-   |
| RS271B LED40/850 PSD MB WH   | 9405     | 8,000/-   |
| RS271B LED40/840 PSD MB WH   | 9405     | 8,000/-   |
| RS271B LED40/830 PSD MB WH   | 9405     | 8,000/-   |
| RS271B LED40/850 PSD WB WH   | 9405     | 8,000/-   |
| RS271B LED40/840 PSD WB WH   | 9405     | 8,000/-   |
| RS271B LED40/830 PSD WB WH   | 9405     | 8,000/-   |



Retail – Cove Lights

## Cove Lights

### Flex Cove G4

FlexCove G4 LED Strip is the professional solution, ideal for application in retail, hospitality & offices. Available in IP20 & IP44 versions, with long system life of 30,000 burning hours. Mounting accessories including Al channel, PC diffuser, leader cable & mounting clips available for order separately. \*Driver to be ordered separately.



| Type                        | HSN Code | MRP (INR) |
|-----------------------------|----------|-----------|
| <b>LED Strips</b>           |          |           |
| LS170S LED4 827 IP20 L5000  |          | 2,800/-   |
| LS170S LED8 827 IP20 L5000  |          | 3,000/-   |
| LS170S LED12 827 IP20 L5000 |          | 3,200/-   |
| LS170S LED16 827 IP20 L5000 |          | 3,500/-   |
| LS170S LED4 827 IP44 L5000  |          | 3,400/-   |
| LS170S LED8 827 IP44 L5000  |          | 3,600/-   |
| LS170S LED12 827 IP44 L5000 |          | 3,800/-   |
| LS170S LED16 827 IP44 L5000 |          | 4,400/-   |
| LS170S LED4 927 IP20 L5000  |          | 3,000/-   |
| LS170S LED8 927 IP20 L5000  |          | 3,200/-   |
| LS170S LED12 927 IP20 L5000 |          | 3,400/-   |
| LS170S LED16 927 IP20 L5000 |          | 4,000/-   |
| LS170S LED4 927 IP44 L5000  |          | 3,600/-   |
| LS170S LED8 927 IP44 L5000  |          | 3,800/-   |
| LS170S LED12 927 IP44 L5000 |          | 4,200/-   |
| LS170S LED16 927 IP44 L5000 |          | 4,600/-   |
| LS170S LED9 TNW IP44 L5000  |          | 11,000/-  |
| LS170S LED10 TNW IP44 L5000 |          | 6,400/-   |



| Type                                  | HSN Code | MRP (INR) |
|---------------------------------------|----------|-----------|
| <b>Mounting Accessories</b>           |          |           |
| AC170Z PC-OP L1000                    |          | 300/-     |
| AC170Z TR-U L1000                     |          | 400/-     |
| AC170Z TR-V L1000                     |          | 500/-     |
| AC170Z PC-OP L1000 TW                 |          | 300/-     |
| AC170Z TR-U L1000 TW                  |          | 400/-     |
| AC170Z TR-V L1000 TW                  |          | 500/-     |
| AC170Z Mounting Clip                  |          | 40/-      |
| AC170Z Mounting Clip WP               |          | 40/-      |
| AC170Z End Cap                        |          | 20/-      |
| AC170Z End Cap TW                     |          | 20/-      |
| AC170Z Connector                      |          | 100/-     |
| AC170Z Connector TW                   |          | 100/-     |
| AC170Z Connector with Leader Cable L  |          | 100/-     |
| AC170Z Connector with Leader Cable H  |          | 100/-     |
| AC170Z Connector with Leader Cable TW |          | 100/-     |

CCT Options with CRI80 - 2400K, 2700K, 4000K, 6500K in both IP20 and IP44. CCT Options with CRI90 - 2400K only in IP20 and IP44. Tunable White Option in IP44



## SkyCove LED Strip

New 5 meter LED Strip especially designed for commercial use.

- Ideal for retail showrooms, hospitality & offices
- Driver included in pack (24W output)
- Long life with 20,000 hours
- Available in 3000K & 6500K



| Type                                 | HSN Code | MRP (INR) |
|--------------------------------------|----------|-----------|
| LED Strip SKYCove 5M WW with driver  | 9405     | 1,540/-   |
| LED Strip SKYCove 5M CDL with driver | 9405     | 1,540/-   |

## Trunking

### Optimus LED Trunking

Trunking based solution for large open areas with high ceiling requiring continuous linear installation. Luminaire is snap fit mount on trunking system, available in two lumen packs. Accessories need to be additionally ordered.



| Type                              | HSN Code | MRP (INR) |
|-----------------------------------|----------|-----------|
| LL199X 1XDLED40-6500 PSE OD WH S1 | 9405     | 4,500/-   |
| LL199X 1XDLED40-4000 PSE OD WH S1 | 9405     | 4,500/-   |
| LL199X 1XDLED40-3000 PSE OD WH S1 | 9405     | 4,500/-   |
| LL199X 1XDLED57-3000 PSE OD WH    | 9405     | 6,200/-   |
| LL199X 1XDLED57-4000 PSE OD WH    | 9405     | 6,200/-   |
| LL199X 1XDLED57-6500 PSE OD WH    | 9405     | 6,200/-   |
| TTX199/03LED                      | 9405     | 3,000/-   |
| TTX199/01 LED                     | 9405     | 1,000/-   |
| ZTX199 BC LED                     | 9405     | 350/-     |
| ZTX200 SMS                        | 9405     | 600/-     |
| ZTX200 EP                         | 9405     | 120/-     |

Also available in IP54 version on request.



Indoor  
Industrial





## Highbays

### GreenPerform Prime

GreenPerform Prime is a new age highbay range that offers an industry leading efficacy of 150 lm/W specially designed to deliver unmatched performance in adverse industrial environments with its robust housing design and cater to diverse applications with multiple options of beam angles.



| Type                          | HSN Code | MRP (INR) |
|-------------------------------|----------|-----------|
| BY515P LED100S 5700 NB PSU GR | 9405     | 13,000/-  |
| BY515P LED150S 5700 NB PSU GR | 9405     | 15,000/-  |
| BY515P LED200S 5700 NB PSU GR | 9405     | 17,000/-  |
| BY515P LED250S 5700 NB PSU GR | 9405     | 22,000/-  |

CCT Options of 5700K and 4000K at the same MRP. Beam Angles Available: NB 60° - 10000 lm, 15000 lm, 20000 lm & 25000 lm | WB 110° - 10000 lm & 15000 lm | ENB 30° - 25000 lm

### GreenPerform Elite Highbay

Awarded with IF Design and Red Dot Design Awards in 2019, GreenPerform Elite Highbay is a power pack of superior performance, best in class efficacy and unmatched product design.



| Type                       | HSN Code | MRP (INR) |
|----------------------------|----------|-----------|
| BY718P LED100/CW PSU NB IN | 9405     | 14,000/-  |
| BY718P LED150/CW PSU NB IN | 9405     | 18,000/-  |
| BY718P LED200/CW PSU NB IN | 9405     | 20,000/-  |
| BY718P LED250/CW PSU NB IN | 9405     | 22,000/-  |
| BY718P LED300/CW PSU NB IN | 9405     | 24,000/-  |

CCT Options CW and NW. Beam angle options NB and WB. Also available in DALI and connected Interact Industry options on request.

### DuraLED Highbay

IP66 & IK08 protected LED Highbay solution with PDC housing, toughened & shattered proof glass available in both Narrow & Wide beam optics.



| Type                                    | HSN Code | MRP (INR) |
|-----------------------------------------|----------|-----------|
| BY325P LED100S CW PSU GR FG NB XTFCL V1 | 9405     | 12,000/-  |
| BY325P LED100S CW PSU GR FG WB XTFCL V1 | 9405     | 12,000/-  |
| BY325P LED130S CW PSU GR FG NB XTFCL V1 | 9405     | 14,500/-  |
| BY325P LED130S CW PSU GR FG WB XTFCL V1 | 9405     | 14,500/-  |
| BY325P LED160S CW PSU GR FG NB XTFCL V1 | 9405     | 17,000/-  |
| BY325P LED160S CW PSU GR FG WB XTFCL V1 | 9405     | 17,000/-  |
| BY325P LED195S CW PSU GR FG NB XTFCL V1 | 9405     | 22,000/-  |
| BY325P LED195S CW PSU GR FG WB XTFCL V1 | 9405     | 22,000/-  |

### Durabay Prime

Durabay Prime is IP66 & IK08 protected next gen highbay solution with PDC housing, delivers uniform light distribution with both NB &WB optics.



| Type                              | HSN Code | MRP (INR) |
|-----------------------------------|----------|-----------|
| BY225P LED100S CW NB PSU FG GR V1 | 9405     | 12,000/-  |
| BY225P LED100S CW WB PSU FG GR V1 | 9405     | 12,000/-  |

Also available in 13500 lumen



## Maxolid

IP65, PDC LED Highbay with circular form factor and available in both Narrow & Wide beam optics options of toughened glass & PC cover to choose from.



| Type                                       | HSN Code | MRP (INR) |
|--------------------------------------------|----------|-----------|
| BY415P LED145S CW HE NB FG PSU GR XTFCL S5 | 9405     | 18,000/-  |
| BY415P LED145S CW HE WB FG PSU GR XTFCL S5 | 9405     | 18,000/-  |
| BY415P LED145S CW NB FG PSD GR S5          | 9405     | 19,000/-  |
| BY415P LED145S CW WB FG PSD GR S5          | 9405     | 19,000/-  |
| BY415P LED145S CW NB PC PSU GR S5          | 9405     | 18,000/-  |
| BY415P LED145S CW WB PC PSU GR S5          | 9405     | 18,000/-  |
| BY415P LED145S CW NB PC PSD GR S5          | 9405     | 19,000/-  |
| BY415P LED145S CW WB PC PSD GR S5          | 9405     | 19,000/-  |
| BY415P LED160S CW HE NB FG PSU GR XTFCL S5 | 9405     | 22,000/-  |
| BY415P LED160S CW HE WB FG PSU GR XTFCL S5 | 9405     | 22,000/-  |
| BY415P LED160S CW NB FG PSD GR S5          | 9405     | 23,000/-  |
| BY415P LED160S CW WB FG PSD GR S5          | 9405     | 23,000/-  |
| BY415P LED275S CW PSU GR FG NB XTFCL V1    | 9405     | 25,500/-  |
| BY415P LED275S CW PSU GR FG WB XTFCL V1    | 9405     | 25,500/-  |
| BY415P LED240S CW PSU GR FG NB XTFCL V1    | 9405     | 24,500/-  |
| BY415P LED240S CW PSU GR FG WB XTFCL V1    | 9405     | 24,500/-  |

Also available in 4000K CCT

## Maxolid NI

Non integral IP65, PDC LED Highbay with circular form factor and available in both Narrow & Wide beam optics, options of toughened glass & PC cover to choose from.



| Type                               | HSN Code | MRP (INR) |
|------------------------------------|----------|-----------|
| BY416P LED240S CW SK60 FG GR NI S5 | 9405     | 20,000/-  |
| BY416P LED240S CW SY20 FG GR NI S5 | 9405     | 20,000/-  |
| ZVS431 2x100W PSU XTFCL            | 9405     | 5,000/-   |
| ZVS431 2x100W PSU XTFCL(IP65)      | 9405     | 7,500/-   |



## GreenUp

Greenup is a Liner highbay solution with three different optics option(NB,WB & HRO-High rack Optic) makes it apt for wide application areas in industry, warehouse & retail.



| Type                        | HSN Code | MRP (INR) |
|-----------------------------|----------|-----------|
| BY560P LED105/CW PSU WB IN  | 9405     | 11,500/-  |
| BY560P LED105/CW PSU HRO IN | 9405     | 12,500/-  |
| BY560P LED160/CW PSU WB IN  | 9405     | 16,500/-  |
| BY560P LED160/CW PSU NB IN  | 9405     | 16,500/-  |
| BY560P LED160/CW PSU HRO IN | 9405     | 17,500/-  |
| BY560P LED210/CW PSU WB IN  | 9405     | 20,000/-  |
| BY560P LED210/CW PSU NB IN  | 9405     | 20,000/-  |
| BY560P LED210/CW PSU HRO IN | 9405     | 21,000/-  |

DALI version available in selective lumen category

## Mini 200

Mini 200 is an intuitive under canopy luminaire suitable for petrol station, sport complex, community center lighting. It has PDC housing, IP66 & IK08 protection & precision control optics- choice of both Symmetric & Asymmetric version available.



| Type                          | HSN Code | MRP (INR) |
|-------------------------------|----------|-----------|
| BY286V LED90S CW SK PSU FG WH | 9405     | 11,000/-  |
| BY286V LED90S CW AK PSU FG WH | 9405     | 11,000/-  |
| BY286V LED85S CW SK PSU FG WH | 9405     | 10,000/-  |
| BY286V LED85S CW AK PSU FG WH | 9405     | 10,000/-  |

## GreenBay

Versatile Highbay family designed to address Recessed and Suspended Lighting application in Industries with multiple options of optics. Mounting accessories to be ordered separately.



| Type                                 | HSN Code | MRP (INR) |
|--------------------------------------|----------|-----------|
| BY400V LED72S CW AK PSU S2 FG WH     | 9405     | 13,500/-  |
| BY400V LED145S CW AK PSU S2 FG WH    | 9405     | 18,500/-  |
| BY400V LED72S CW SK PSU S2 FG WH     | 9405     | 13,500/-  |
| BY400V LED110S CW SK PSU S2 FG WH    | 9405     | 16,500/-  |
| BY400V LED145S CW SK PSU S2 FG WH    | 9405     | 18,500/-  |
| BY400V LED72S CW SY60 PSU S2 FG WH   | 9405     | 13,500/-  |
| BY400V LED110S CW SY60 PSU S2 FG WH  | 9405     | 16,500/-  |
| BY400V LED145S CW SY60 PSU S2 FG WH  | 9405     | 18,500/-  |
| BY400V LED72S CW SY110 PSU S2 FG WH  | 9405     | 13,500/-  |
| BY400V LED110S CW SY110 PSU S2 FG WH | 9405     | 16,500/-  |
| BY400V LED145S CW SY110 PSU S2 FG WH | 9405     | 18,500/-  |
| BY400V LED110S CW AK PSU S2 FG WH    | 9405     | 16,500/-  |
| AC400Z WH                            | 9405     | 800/-     |
| AC400B WH-RECESS                     | 9405     | 1,600/-   |
| AC400C WH-SURFACE                    | 9405     | 1,800/-   |
| AC400P WH-SUSPENDED                  | 9405     | 3,500/-   |

## EnduraLED Midbay

Robust & reliable IP66 & IK08 protected LED midbay with PDC housing & toughened glass suitable for ceiling (Surface/Suspended) mount & available in Wide beam (Rotational Symmetric) optics.



| Type                                     | HSN Code | MRP (INR) |
|------------------------------------------|----------|-----------|
| BY150P LED76S CW PSU HE SY120 FG GR      | 9405     | 9,500/-   |
| BY150P LED76S CW PSU HE SY120 FG GR LILO | 9405     | 10,000/-  |



## LED Bulkhead & Wellglass

### DuraLED WellGlass G2

New Gen2 of DuraLED WellGlass with improved lumen efficacy and lumen packs upto 4200lm with Single piece pressure die cast aluminium Wellglass, high quality PC diffuser and has multiple mounting options available (Wall, Ceiling, Eyebolt & Cradle).



| Type                               | HSN Code | MRP (INR) |
|------------------------------------|----------|-----------|
| BY300P LED31 757 PSU PC IN S2      | 9405     | 4,500/-   |
| BY300P LED31 757 PSU PC IN S2 LILO | 9405     | 5,000/-   |
| BY300P LED31 757 PSU PC IN S2 SPD  | 9405     | 5,500/-   |
| BY300P LED37 757 PSU PC IN S2      | 9405     | 5,000/-   |
| BY300P LED37 757 PSU PC IN S2 LILO | 9405     | 5,500/-   |
| BY300P LED37 757 PSU PC IN S2 SPD  | 9405     | 6,000/-   |
| BY300P LED42 757 PSU PC IN S2      | 9405     | 5,500/-   |
| BY300P LED42 757 PSU PC IN S2 LILO | 9405     | 6,000/-   |
| BY300P LED42 757 PSU PC IN S2 SPD  | 9405     | 6,500/-   |

CCT Options of 4000K & 5700K

## DuraLED WellGlass

Single piece pressure die cast aluminium Wellglass with high quality PC diffuser and has multiple mounting options available (Wall, Ceiling, Eyebolt & Cradle).



| Type                             | HSN Code | MRP (INR) |
|----------------------------------|----------|-----------|
| BY300P LED 27S CW PSU S1 PC      | 9405     | 4,500/-   |
| BY300P LED 27S CW PSU S1 PC LILO | 9405     | 5,000/-   |
| BY300P LED 27S CW PSU S1 PC SPD  | 9405     | 5,500/-   |
| BY300P LED 37S CW PSU S1 PC      | 9405     | 5,000/-   |
| BY300P LED 37S CW PSU S1 PC LILO | 9405     | 5,500/-   |
| BY300P LED 37S CW PSU S1 PC SPD  | 9405     | 6,000/-   |

Also available in NW & WW

## EnduraLED WellGlass

Robust & reliable IP66 & IK08 protected LED Wellglass luminaire with PDC housing & polycarbonate diffuser suitable for Wall & Ceiling mounting application.



| Type                       | HSN Code | MRP (INR) |
|----------------------------|----------|-----------|
| BY201P LED78S CW PSU HE PC | 9405     | 7,200/-   |

LILO option available on demand.

## EnduraLED Bulkhead

Pressure Die cast housing LED bulkhead with IP66 Protection and IK09 impact resistance suitable for surface and wall mounting applications.



| Type                      | HSN Code | MRP (INR) |
|---------------------------|----------|-----------|
| WT202W LED6S NW PSU S2 PC | 9405     | 1,600/-   |
| WT202W LED6S CW PSU S2 PC | 9405     | 1,600/-   |

## VistaGlow

Robust & reliable LED bulk head with IP65 Protection & IK08 impact resistance suitable for surface and wall mounting applications.



| Type                      | HSN Code | MRP (INR) |
|---------------------------|----------|-----------|
| WT140W LED7S CW PSU S1 PC | 9405     | 999/-     |
| WT140W LED7S NW PSU S1 PC | 9405     | 999/-     |



Indoor Industrial - Industrial Battens

## Industrial Battens

### EnduraLED Next

Flicker free, high efficiency and robust industrial batten family suitable for Surface, Wall and Conduit mounting. The product family offers dimmable and connected batten option.



| Type                           | HSN Code | MRP (INR) |
|--------------------------------|----------|-----------|
| BN308C LED20S-6500 L60 PSU WH  | 9405     | 1,900/-   |
| BN308C LED20S-6500 L120 PSU WH | 9405     | 1,950/-   |
| BN308C LED40S-6500 L120 PSU WH | 9405     | 3,200/-   |
| BN308C LED60S-6500 L120 PSU WH | 9405     | 4,400/-   |
| BN308C LED40S-6500 L120 PSD WH | 9405     | 4,500/-   |
| BN308C LED20S-6500 L120 PIR WH | 9405     | 2,950/-   |
| BN308C LED40S-6500 L120 PIR WH | 9405     | 4,200/-   |
| BN308C LED60S-6500 L120 PIR WH | 9405     | 5,400/-   |
| <b>Mounting Accessories</b>    |          |           |
| AC308C MB S/A                  | 9405     | 100/-     |
| AC308P MB S/A                  | 9405     | 100/-     |

Also available in 4000K & interact ready platform variant

### TMC 501

Mounting rail for TLED lamps.



| Type                        | HSN Code | MRP (INR) |
|-----------------------------|----------|-----------|
| TMC 501 P 1xT-LED 22W P3241 | 9405     | 500/-     |
| TMC 501 P 2xT-LED 22W P3242 | 9405     | 600/-     |





## Waterproof LED Luminares

### Smartbright Waterproof

IP65, Dust and Waterproof LED luminaire with Polycarbonate Housing suitable for wall & ceiling mount applications.



| Type                        | HSN Code | MRP (INR) |
|-----------------------------|----------|-----------|
| WT201C LED44S-6500 PSU L120 | 9405     | 4,000/-   |
| WT201C LED24S-6500 PSU L120 | 9405     | 3,000/-   |

Also available in 4000K

### Essential SmartBright IP65 Batten

Essential SmartBright Batten provides the opportunity to the customers to upgrade to a superior quality IP65 batten assuring high performance in harsh industrial environments.



| Type                         | HSN Code | MRP (INR) |
|------------------------------|----------|-----------|
| WT150C LED 20S 6500 PSU L120 | 9405     | 2,800/-   |
| WT150C LED 20S 4000 PSU L120 | 9405     | 2,800/-   |
| WT150C LED 40S 6500 PSU L120 | 9405     | 3,800/-   |
| WT150C LED 40S 4000 PSU L120 | 9405     | 3,800/-   |

### Waterproof LED Luminaire

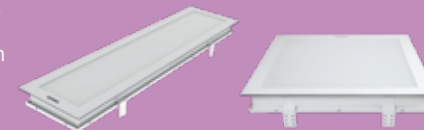
Surface/Suspended Mounted waterproof (IP65) luminaire suitable for single and twin T8 TLED lamps.



| Type                      | HSN Code | MRP (INR) |
|---------------------------|----------|-----------|
| TCW450 P 1XTLED 19W P3397 | 9405     | 2,200/-   |
| TCW450 P 2XTLED 19W P3397 | 9405     | 2,500/-   |

### PureSpace Clean Room Range

PureSpace is a comprehensive Cleanroom luminaires range with options for bottom opening, top opening, 2'x2' as well 1'x4'.



| Type                                    | HSN Code | MRP (INR) |
|-----------------------------------------|----------|-----------|
| CR652B LED60S-6500 PSU CA TO W30L120 WH | 9405     | 18,000/-  |
| CR652B LED36S-6500 PSU CA BO W30L120 WH | 9405     | 15,000/-  |
| CR652B LED36S-6500 PSU CA TO W60L60 WH  | 9405     | 13,000/-  |
| CR652B LED60S-6500 PSU CA TO W60L60 WH  | 9405     | 16,000/-  |
| CR652B LED80S-6500 PSU CA TO W60L60 WH  | 9405     | 18,000/-  |
| CR652B LED36S-6500 PSU CA BO W60L60 WH  | 9405     | 12,500/-  |
| CR652B LED60S-6500 PSU CA BO W60L60 WH  | 9405     | 15,000/-  |
| CR652B LED80S-6500 PSU CA BO W60L60 WH  | 9405     | 17,500/-  |

CCT Options 6500K and 4000K. Also available in DALI option at additional INR 3000/- on MRP.

# interact Pro

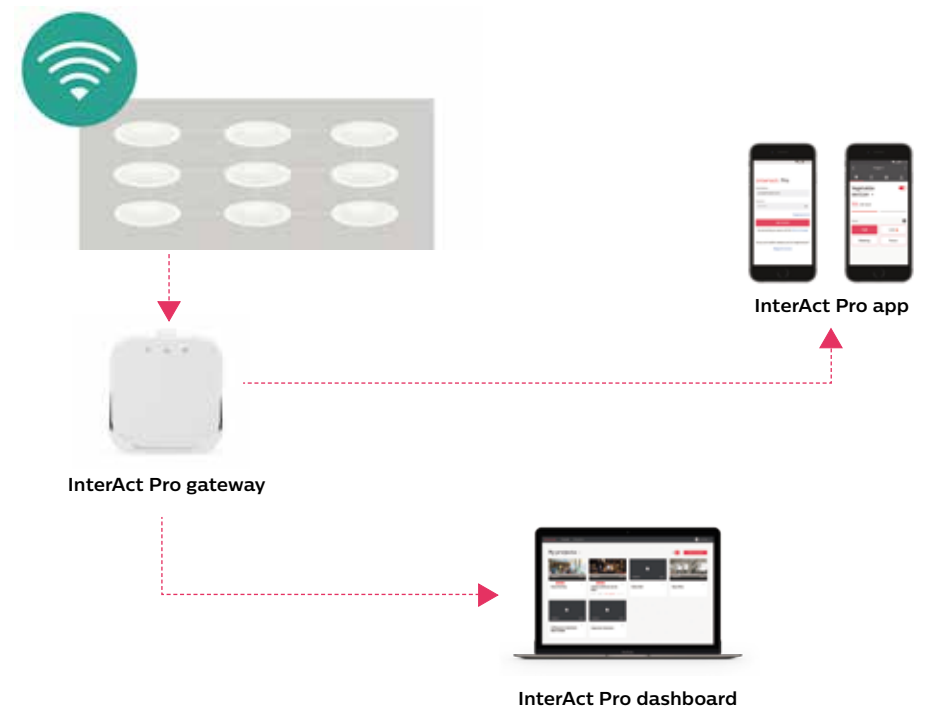
An intuitive app and dashboard that works with Philips InterAct Ready lamps and luminaires to bring the power of IoT.

Lights. Insights. Action.

It enables you to both control and receive data from the LED light points and sensors within the connected lighting system. You can program and automate light settings, while collecting data on where and how you use lighting. It's intuitive to set up and use. And it's the smart way to optimize energy savings.

## How the connected lighting system comes together.

The **Interact Pro dashboard and app** work with a range of Philips luminaires and lamps and a set of wireless switches and sensors that are InterAct Ready. You can customize the software's settings for specific workspaces. Whether you're connecting 20 light points or 200, Interact Pro helps everyone to work smarter.



Interact Pro connected  
lighting dashboard and app



#### Key benefits:

- Power of Personalization
- Energy usage Dashboards with failure reports
- Fast installation, no cables

## How is InterAct unique?

InterAct Pro is a truly unique offering today in the market and suits all your lighting needs- whether you are building a new small office or a retail shop, or you are planning an upgrade from your existing Conventional Lighting to LED Lighting system (retrofit).

#### Completely Wireless Setup

Organizations today are specifically constrained in a retrofit setup to explore the benefits of connected lighting, as it requires wiring, layout changes and a deep renovation leading to significant work downtime. InterAct Pro is a completely wireless solution and hence does not require any new wirings or changes in your workplace.

#### Power of Simplicity

System complexity often scares organizations and workplace leaders to completely explore the benefits of connected lighting and this is specifically true for small spaces. With its Intuitive App and commissioning simplicity, InterAct Pro provides a unique connected platform.

## Philips Interact Ready connected lighting

InterAct Pro software is designed to be affordable for small spaces. It works with any Philips Lighting connected LED lamps and luminaires that are Interact Ready. Sensors and wall switches are interoperable and upgradeable, meaning you're prepared for any changes the future might throw at you.

You can start saving energy straight away, with direct point-for-point replacement of conventional lights.



| Type                                | HSN Code | MRP (INR)  |
|-------------------------------------|----------|------------|
| DN395B LED20S-6500 IA WH            | 9405     | 6,000/-    |
| DN395B LED20S-4000 IA WH            | 9405     | 6,000/-    |
| DN395B LED20S-3000 IA WH            | 9405     | 6,000/-    |
| RS271B LED40S-4000 IA MB WH         | 9405     | 8,500/-    |
| RS271B LED40S-3000 IA MB WH         | 9405     | 8,500/-    |
| RS271B LED20S-4000 IA MB WH         | 9405     | 8,000/-    |
| RS271B LED20S-3000 IA MB WH         | 9405     | 8,000/-    |
| RS271B LED40S-4000 IA WB WH         | 9405     | 8,500/-    |
| RS271B LED40S-3000 IA WB WH         | 9405     | 8,500/-    |
| RS271B LED20S-4000 IA WB WH         | 9405     | 8,000/-    |
| RS271B LED20S-3000 IA WB WH         | 9405     | 8,000/-    |
| RC380B LED36S-4000 IA W60L60 G4 OD  | 9405     | 7,500/-    |
| RC380B LED36S-6500 IA W60L60 G4 OD  | 9405     | 7,500/-    |
| RC380B LED30S-4000 IA W60L60 G4 OD  | 9405     | 6,500/-    |
| RC380B LED30S-6500 IA W60L60 G4 OD  | 9405     | 6,500/-    |
| BN308C LED40S-6500 L120 IA WH       | 9405     | 5,200/-    |
| BN308C LED40S-4000 L120 IA WH       | 9405     | 5,200/-    |
| Wireless Occupancy Sensor EasySmart | -        | 10,000/-   |
| ZigBee Green Power Switch Dim       | -        | 12,000/-   |
| ProSite v20                         | -        | 1,00,000/- |
| ProSite v50                         | -        | 1,30,000/- |
| ProSite v100                        | -        | 1,50,000/- |
| ProSite v150                        | -        | 2,00,000/- |
| ProSite v200                        | -        | 2,50,000/- |



PHILIPS



Outdoor



## Street Lights

### SmartBright Street

High performance low wattage street light with Single Die ceramic base high power LED light source with IP66 protection, PDC housing with finless design and high impact resistance (IK08) Polycarbonate cover luminaire. Pole Dia : 32-40mm



| Type                                  | HSN Code | MRP (INR) |
|---------------------------------------|----------|-----------|
| BRP042 LED 14 CW MR S1 PSU GR         | 9405     | 2,300/-   |
| BRP042 LED 19 CW MR S1 PSU GR         | 9405     | 2,500/-   |
| BRP042 P LED25 CW SLE S1 PSU GR P4210 | 9405     | 3,200/-   |

CCT Options of 3000K and 4000K. Add Rs. 200/- for SPD version.

### SmartBright Street

High performance low wattage street light with Single Die ceramic base high power LED light source, IP66 protection, PDC housing with finless design and high impact resistance (IK08) Polycarbonate cover with integrated street Light optics. Pole Dia.: 32-40mm



| Type                          | HSN Code | MRP (INR) |
|-------------------------------|----------|-----------|
| BRP046 LED 30 CW MR S1 PSU GR | 9405     | 4,500/-   |
| BRP046 LED 36 CW MR S1 PSU GR | 9405     | 5,000/-   |
| BRP046 LED 39 CW MR S1 PSU GR | 9405     | 5,300/-   |

CCT Options of 3000K and 4000K. Add Rs. 300/- for SPD version.

### SmartBright Street

High performance street light luminaire with Single Die ceramic base high power LED light source, IP66 protection, PDC housing & aesthetic finless design and toughened glass cover and street light optics for lighting of internal B2 category roads in cities. Pole Dia.: 32-40 mm



| Type                                 | HSN Code | MRP (INR) |
|--------------------------------------|----------|-----------|
| BRP 052 LED 045 CW SLMR FG S1 PSU GR | 9405     | 6,200/-   |

CCT Options of 3000K and 4000K.

### SmartBright Street

High Performance street light luminaire having Single Die ceramic base high power LED light source, IP66 protection, PDC housing with Finless design and polycarbonate cover (IK08). The luminaire family comes with dedicated street Optics making it suitable for B2 Category roads. Pole Dia: 48-60mm



| Type                       | HSN Code | MRP (INR) |
|----------------------------|----------|-----------|
| BRP056 LED47 CW SLF PSU S1 | 9405     | 5,500/-   |
| BRP056 LED53 CW SLF PSU S1 | 9405     | 5,650/-   |
| BRP056 LED59 CW SLF PSU S1 | 9405     | 5,800/-   |

CCT Options of 3000K and 4000K. Add Rs. 400/- for SPD version.

### SmartBright Street

High Performance street light luminaire having Single Die ceramic base high power LED light source, IP66 protection, PDC housing with Finless design and polycarbonate cover (IK08). The luminaire family comes with dedicated street Optics making it suitable for wide variety of road applications (A2 Category of Roads, Highways (Single/Multi Lane). Pole Dia.: 48-60mm



| Type                        | HSN Code | MRP (INR) |
|-----------------------------|----------|-----------|
| BRP062 LED 65 CW SLA S1 PSU | 9405     | 6,000/-   |
| BRP062 LED 68 CW SLC S1 PSU | 9405     | 6,000/-   |
| BRP062 LED 82 CW SLA S1 PSU | 9405     | 8,000/-   |
| BRP062 LED 84 CW SLC S1 PSU | 9405     | 8,000/-   |

CCT Options of 3000K and 4000K. Add Rs. 400/- for SPD version.





## Skyline

Skyline Family is an IP66 road lighting luminaire with Single Die ceramic base high power LED light source, PDC housing with top openable access to drivers for ease of maintenance. Integrated optics ensure uniform distribution and higher efficacy thus offering higher spacing between poles and maintenance free system. Ideal for road width up to 8-12 mts. Pole Dia: 48-60mm



| Type                                | HSN Code | MRP (INR) |
|-------------------------------------|----------|-----------|
| BRP 340 LED 150 CW HO SLC S2 PSU GR | 9405     | 14,000/-  |
| BRP 340 LED 175 CW HO SLC S2 PSU GR | 9405     | 16,000/-  |
| BRP 340 LED 200 CW HO SLC S2 PSU GR | 9405     | 18,000/-  |

CCT Options of 3000K and 4000K. Add Rs. 800/- for SPD version. Option available for 1-10V Dimmable driver.

**Interact ready.**

## Skyline Xtra

Skyline Xtra family is an IP66 road lighting luminaire with high power LED light source, PDC housing with top openable access to drivers for ease of maintenance. Integrated optics ensure uniform distribution and higher efficacy thus offering higher spacing between poles and maintenance free system ideal for road width up to 8-15 mts. (170W -235W). Pole Dia: 48-60mm.



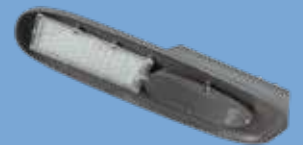
| Type                               | HSN Code | MRP (INR) |
|------------------------------------|----------|-----------|
| BRP360 LED 213 CW HO SLC S1 PSU GR | 9405     | 24,000/-  |
| BRP360 LED 240 CW HO SLC S1 PSU GR | 9405     | 27,000/-  |
| BRP360 LED 265 CW HO SLC S1 PSU GR | 9405     | 29,900/-  |
| BRP360 LED 295 CW HO SLC S1 PSU GR | 9405     | 33,000/-  |

CCT Options of 3000K and 4000K. Add Rs. 800/- for SPD version. Option available for 1-10V Dimmable driver.

**Interact ready.**

## SmartBright Essential

SmartBright Essential is a street lighting luminaire with PDC housing and street light optics to ensure uniform distribution.



| Type                            | HSN Code | MRP (INR) |
|---------------------------------|----------|-----------|
| BRP042 P LED25 CW SLE PSU GR DX | 9405     | 3,000/-   |
| BRP030 LED35 CW MR PSU GR DX    | 9405     | 3,500/-   |
| BRP031 LED45 CW MR PSU GR DX    | 9405     | 5,000/-   |
| BRP032 LED70 CW MR PSU GR DX    | 9405     | 7,000/-   |

## GreenLine V2

GreenLine V2 is an IP66 road lighting luminaire with Single Die ceramic base high power LED light source, PDC housing, Toughened Glass cover and unique peanut lens to ensure uniform light distribution, higher spacing between poles and maintenance free system. Suitable for A1 and A2 category roads. Pole Dia : 48-60mm



| Type                              | HSN Code | MRP (INR) |
|-----------------------------------|----------|-----------|
| BRP409 LED115 CW SLC FG PSU GR V2 | 9405     | 9,400/-   |
| BRP409 LED115 CW SLA FG PSU GR V2 | 9405     | 9,400/-   |
| BRP409 LED130 CW SLC FG PSU GR V2 | 9405     | 10,200/-  |
| BRP409 LED130 CW SLA FG PSU GR V2 | 9405     | 10,200/-  |

CCT Options of 3000K and 4000K. Add Rs. 400/- for SPD version. Option available for 1-10V Dimmable driver.



# interact City

Full End-to-End Lighting management application.  
Easy to install, use and expand.

Philips offer wide variety of street light luminaires with smart devices, enabled for integration on to Interact Platform. Product support wired and wireless architectures offered as part connected portfolio for cities.

## Interact Ready street light options



BRP410  
GreenLineV2



BRP340  
Skyline



BRP360  
Skyline Xtra



BRP322  
GreenlineXtra



BRP371  
Unistreet



BRP471  
RoadCharm



## Flood Lights

### Uniflood

Uniflood is a flood lighting luminaire with Single Die ceramic base high power LED LED, PDC Housing and unique flood optics (NB) to ensure uniform distribution.



| Type                          | HSN Code | MRP (INR) |
|-------------------------------|----------|-----------|
| BVP120 LED 35 CW FG S1 PSU GR | 9405     | 7,500/-   |
| BVP120 LED 70 CW FG S1 PSU GR | 9405     | 13,500/-  |

CCT Options of 3000K and 4000K. Add Rs. 200/- for SPD version.

### Tango Mini

Tango Mini is a flood lighting luminaire with Single Die ceramic base high power LED LED, PDC Housing and unique flood optics (NB) to ensure uniform distribution. maintenance free system, ideal for Area lighting, Billboard lighting and Mini mast lighting.



| Type                             | HSN Code | MRP (INR) |
|----------------------------------|----------|-----------|
| BVP192 LED82 CW HO NB FG GR PSU  | 9405     | 10,000/-  |
| BVP192 LED110 CW HO NB FG GR PSU | 9405     | 12,000/-  |
| BVP192 LED145 CW NB FG GR PSU    | 9405     | 20,000/-  |
| BVP192 LED160 CW NB FG GR PSU    | 9405     | 22,000/-  |

CCT Options of 3000K and 4000K. Add Rs. 400/- for SPD version. Option available for 1-10V Dimmable driver.

### Uniflood 2

Uniflood is a flood lighting luminaire with Single Die ceramic base high power LED LED, PDC Housing and unique flood optics( AMB,SY,NB) to ensure uniform distribution. Maintenance free systems Ideal for Industrial, Area, Recreational Sports - Outdoor & indoor Stadiums.



| Type                                   | HSN Code | MRP (INR) |
|----------------------------------------|----------|-----------|
| BVP122 LED 124 CW HE AK55 FG XTFCL S4  | 9405     | 25,000/-  |
| BVP122 LED 135 CW HE SY20° FG XTFCL S4 | 9405     | 25,000/-  |
| BVP122 LED 135 CW HE NB FG XTFCL S4    | 9405     | 25,000/-  |
| BVP122 LED 142 CW HE AK55° FG XTFCL S4 | 9405     | 28,000/-  |
| BVP122 LED 150 CW HE SY20° FG XTFCL S4 | 9405     | 28,000/-  |
| BVP122 LED 150 CW HE NB FG XTFCL S4    | 9405     | 28,000/-  |
| BVP122 LED 170 CW HO NB FG FC S5 P4319 | 9405     | 28,000/-  |

CCT Options of 3000K and 4000K. Add Rs. 800/- for SPD version. Option available for 1-10V Dimmable driver.

### Tango LED

"Best in class Lens Design & Optical integration" is a Flood lighting luminaire with Single Die ceramic base high power LED LED, PDC Housing & integrated flood optics (SWB, NB, AMB, SMB, SWB) to ensure uniform distribution maintenance free system, ideal for sports lighting, area lighting and high mast lighting.



| Type                        | HSN Code | MRP (INR) |
|-----------------------------|----------|-----------|
| BVP483 LED185 CW SWB PSU GR | 9405     | 19,000/-  |
| BVP483 LED185 CW NB PSU GR  | 9405     | 19,000/-  |
| BVP483 LED185 CW SMB PSU GR | 9405     | 19,000/-  |
| BVP483 LED185 CW AWB PSU GR | 9405     | 20,000/-  |
| BVP483 LED185 CW AMB PSU GR | 9405     | 20,000/-  |
| BVP483 LED210 CW SWB PSU GR | 9405     | 21,000/-  |
| BVP483 LED210 CW NB PSU GR  | 9405     | 21,000/-  |
| BVP483 LED210 CW SMB PSU GR | 9405     | 21,000/-  |
| BVP483 LED210 CW AWB PSU GR | 9405     | 22,000/-  |
| BVP483 LED210 CW AMB PSU GR | 9405     | 22,000/-  |
| BVP483 LED235 CW SWB PSU GR | 9405     | 25,000/-  |
| BVP483 LED235 CW NB PSU GR  | 9405     | 25,000/-  |
| BVP483 LED235 CW AWB PSU GR | 9405     | 25,000/-  |
| BVP483 LED235 CW AMB PSU GR | 9405     | 25,000/-  |
| BVP483 LED235 CW SMB PSU GR | 9405     | 25,000/-  |

CCT Options of 3000K and 4000K. 10 KV SPD is provisioned. Option available for 1-10V Dimmable driver.

**Interact ready.**



## TempoLED

TempoLED is a flood lighting luminaire with high power LED and unique flood optics to ensure uniform distribution and maintenance free system ideal for area lighting, high mast and billboard.



| Type                                   | HSN Code | MRP (INR) |
|----------------------------------------|----------|-----------|
| BVP410 LED 245 CW HE NBW FG S4 XTFCL   | 9405     | 50,000/-  |
| BVP410 LED 260 CW HE AK55 FG S4 XTFCL  | 9405     | 50,000/-  |
| BVP410 P LED300 CW NB FG PSU SPD P4278 | 9405     | 54,000/-  |

CCT Options of 3000K and 4000K. 10 KV SPD is provisioned. Option available for 1-10V Dimmable driver.

**Interact ready.**

## Tango LED - Double Decker

Tango LED - Double Decker with "Best in class Lens Design & Optical Integration" is a Flood lighting luminaire with Single Die ceramic base high power LED, PDC Housing with integrated flood optics (SWB, NB, AMB, SMB, SWB) to ensure uniform distribution and maintenance free system, ideal for sports lighting, area lighting and high mast lighting.



| Type                                | HSN Code | MRP (INR) |
|-------------------------------------|----------|-----------|
| BVP483 P LED185 X2 CW SWB PSU P4150 | 9405     | 56,000/-  |
| BVP483 P LED185 X2 CW NB PSU P4151  | 9405     | 56,000/-  |
| BVP483 P LED185 X2 CW AWB PSU P4152 | 9405     | 56,000/-  |
| BVP483 P LED185 X2 CW AMB PSU P4153 | 9405     | 56,000/-  |
| BVP483 P LED185 X2 CW SMB PSU P4154 | 9405     | 56,000/-  |
| BVP483 P LED210 X2 CW SWB PSU P4145 | 9405     | 60,000/-  |
| BVP483 P LED210 X2 CW NB PSU P4146  | 9405     | 60,000/-  |
| BVP483 P LED210 X2 CW AWB PSU P4147 | 9405     | 60,000/-  |
| BVP483 P LED210 X2 CW AMB PSU P4148 | 9405     | 60,000/-  |
| BVP483 P LED210 X2 CW SMB PSU P4149 | 9405     | 60,000/-  |
| BVP483 P LED235 X2 CW SWB PSU P4140 | 9405     | 65,000/-  |
| BVP483 P LED235 X2 CW NB PSU P4141  | 9405     | 65,000/-  |
| BVP483 P LED235 X2 CW AWB PSU P4142 | 9405     | 65,000/-  |
| BVP483 P LED235 X2 CW AMB PSU P4143 | 9405     | 65,000/-  |
| BVP483 P LED235 X2 CW SMB PSU P4144 | 9405     | 65,000/-  |

CCT Options of 3000K and 4000K. 10 KV SPD is provisioned. Option available for 1-10V Dimmable driver.

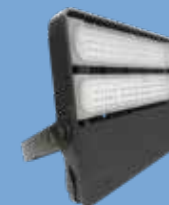
**Interact ready.**



Outdoor - Flood Lights

## Tango XL LED

Tango XL LED - with "Best in class Lens Design & Optical integration" is a Flood lighting luminaire with Single Die ceramic base high power LED, PDC Housing with integrated flood optics (AWB, FLNB, NB) to ensure uniform distribution and maintenance free system, ideal for Recreational sports lighting, area lighting and high mast lighting.



| Type                            | HSN Code | MRP (INR) |
|---------------------------------|----------|-----------|
| BVP485 LED370 CW AWB PSU SPD GR | 9405     | 57,200/-  |
| BVP485 LED370 CW NB PSU SPD GR  | 9405     | 57,200/-  |
| BVP485 LED427 CW AWB PSU SPD GR | 9405     | 62,400/-  |
| BVP485 LED427 CW NB PSU SPD GR  | 9405     | 62,400/-  |
| BVP485 LED485 CW AWB PSU SPD GR | 9405     | 70,200/-  |
| BVP485 LED485 CW NB PSU SPD GR  | 9405     | 70,200/-  |
| BVP485 LED540 CW AWB PSU SPD GR | 9405     | 78,000/-  |
| BVP485 LED540 CW NB PSU SPD GR  | 9405     | 78,000/-  |
| BVP485 LED560 CW AWB PSU SPD GR | 9405     | 83,200/-  |
| BVP485 LED560 CW NB PSU SPD GR  | 9405     | 83,200/-  |

CCT Options of 3000K and 4000K. 20 KV SPD is provisioned. Dimmable 1-10V. **Interact ready.**

## Sportstar Gen2

Philips SportsStar Gen2 is a revolutionary innovative product for sports lighting, being one to one replacement to ArenaVision MVF403 2000W applications. Equipped with professional sports beam angle & complying with HDTV broadcasting requirement.

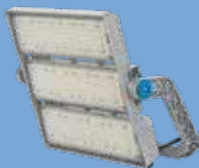


| Type                                 | HSN Code | MRP (INR)  |
|--------------------------------------|----------|------------|
| BVP680 LED1620/957 1620W 230-400V S2 | -        | On request |
| BVP680 LED1620/957 1620W 230-400V S5 | -        | On request |
| BVP680 LED1620/957 1620W 230-400V S7 | -        | On request |



## ArenaVision LED Gen 3.5

The Philips ArenaVision LED floodlighting system is an innovative LED pitch-lighting solution supporting the latest TV broadcasting standards. Designed exclusively for sports and multi-purpose venues, ArenaVision LED offers outstanding light quality, effective thermal management, and long lifetime.



| Type                                    | HSN Code | MRP (INR)  |
|-----------------------------------------|----------|------------|
| BVP428 1560/957 PSU 220-400V BV S7 T40  | -        | On request |
| BVP428 1560/957 PSU 220-400V HGB S7 T40 | -        | On request |

## Tempo Mini

Tempo Mini is a flood lighting luminaire with PDC Housing and unique flood optics( NB) to ensure uniform distribution.



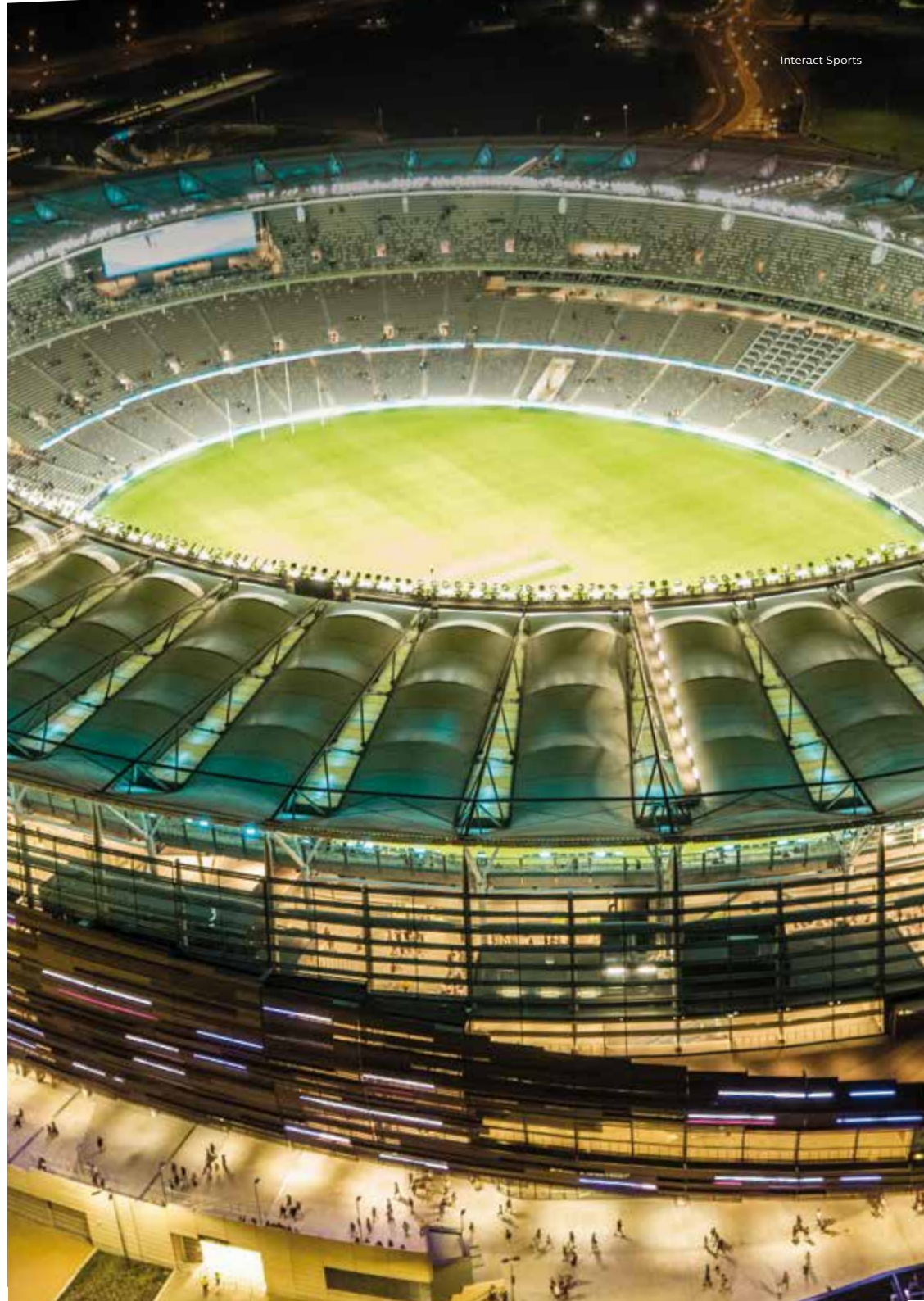
| Type                                    | HSN Code | MRP (INR) |
|-----------------------------------------|----------|-----------|
| BVP180 LED50 CW PC WB 50W 120-270 PSU   | -        | 5,000/-   |
| BVP181 LED62 CW PC WB 70W 120-270 PSU   | -        | 7,000/-   |
| BVP182 LED100 CW FG WB 100W 120-270 PSU | -        | 9,500/-   |

## SmartBright Essential

SmartBright essential flood light is aesthetically designed flood lighting luminaire for superior performance.



| Type                                     | HSN Code | MRP (INR) |
|------------------------------------------|----------|-----------|
| BVP140 P LED50 CW WB S1 PSU 50W MG P4287 | -        | 5,000/-   |
| BVP141 LED70 CW FG GR PSU                | -        | 7,000/-   |
| BVP142 LED100 CW FG GR PSU               | -        | 9,500/-   |
| BVP183 LED140 CW FG WB 150W PSU          | -        | 14,000/-  |
| BVP184 LED196 CW FG WB 200W PSU          | -        | 18,000/-  |





# interact Sports

The Interact Sports dashboard and application suite collect and deliver unique data insights that help you manage both your venue and your audience as efficiently as possible.

Philips Offer wide variety of Flood light luminaires with smart devices ,Enabled for Integration on to Interact Sports Platform.  
Product support Wired and Wireless Architectures offered as part connected portfolio for Sports Facilities

## Interact Ready flood light options



BVP483  
Tango



BVP483 DD  
Tango DD



BVP410  
Temp LED



BVP485  
Tango XL



BVP621  
Sportstar Gen1



BVP680  
SportStar Gen II



AV 3.5  
Arena Vision Gen 3.5



## Landscape Lighting

### Town Glow Post Top

Town Glow is a contemporary designer IP66/IK10 Post Top lantern with symmetric Light distribution.

| Type                          | HSN Code | MRP (INR) |
|-------------------------------|----------|-----------|
| BGP300 LED28 757 PSU PC IN S1 | 9405     | 18,000/-  |
| BGP300 LED40 757 PSU PC IN S1 | 9405     | 19,000/-  |
| BGP300 LED50 757 PSU PC IN S1 | 9405     | 20,000/-  |

CCT options: 3000K and 4000K. Add Rs. 800/- for SPD version.



### LED Post Top

Reliable and aesthetic designed IP65 post top lantern with symmetric light distribution and limited upward light component.

| Type                                   | HSN Code | MRP (INR) |
|----------------------------------------|----------|-----------|
| BGP161 LED2500/NW PSU 220-240V 7043 IN | 9405     | 20,000/-  |
| BGP161 LED2300/WW PSU 220-240V 7043 IN | 9405     | 20,000/-  |



### CityCube Post Top

CityCube is a contemporary and sleek design IP66/IK08 Post top lantern with options of flat and drop diffuser for street light and area light distribution.



| Type                       | HSN Code | MRP (INR) |
|----------------------------|----------|-----------|
| BGP400 LED25 L CW PC S1    | 9405     | 37,500/-  |
| BGP400 LED50 L CW PC S1    | 9405     | 43,000/-  |
| BGP400 LED35 L CW MR FG S1 | 9405     | 37,500/-  |
| BGP400 LED70 L CW MR FG S1 | 9405     | 43,000/-  |
| BGP400 LED25 Y CW PC S1    | 9405     | 43,000/-  |
| BGP400 LED50 Y CW PC S1    | 9405     | 48,000/-  |

CCT options: 3000K and 4000K.

### CityCube Bollard U

CityCube Bollard is a robustly designed IP65/IK10 bollard and is easy to install with base plate.

| Type                        | HSN Code | MRP (INR) |
|-----------------------------|----------|-----------|
| BCP400 LED04 U CW PSU GR S1 | 9405     | 10,000/-  |

CCT options 3000K and 4000K.



### CityCube Bollard P

CityCube Bollard is a robustly designed IP65/IK10 bollard and is easy to install with base plate.

| Type                        | HSN Code | MRP (INR) |
|-----------------------------|----------|-----------|
| BCP400 LED05 P CW PSU GR S1 | 9405     | 11,500/-  |

CCT options: 3000K and 4000K.



### CityCube Bollard T

CityCube Bollard is a robustly designed IP65/IK10 bollard and is easy to install with base plate.

| Type                        | HSN Code | MRP (INR) |
|-----------------------------|----------|-----------|
| BCP400 LED09 T CW PSU GR S1 | 9405     | 17,000/-  |

CCT options: 3000K and 4000K.





## CityCube Bollard D

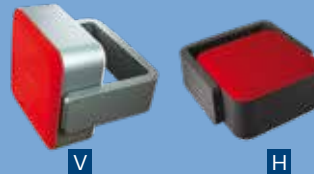
CityCube Bollard is a robustly designed IP65/IK10 bollard and is easy to install with base plate.



| Type                        | HSN Code | MRP (INR) |
|-----------------------------|----------|-----------|
| BCP400 LED09 D CW PSU GR S1 | 9405     | 11,500/-  |

## CityCube Wall Mount Horizontal/Vertical

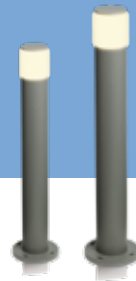
CityCube wall mount is a contemporary and sleek design IP65/IK10 wall mount with symmetric light distribution.



| Type                        | HSN Code | MRP (INR) |
|-----------------------------|----------|-----------|
| BWS400 LED05 H CW PSU GR S1 | 9405     | 6,000/-   |
| BWS400 LED05 V CW PSU GR S1 | 9405     | 6,000/-   |

## LED Bollard

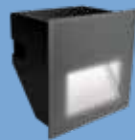
Robustly designed IP65/IK10 bollard and is easy to install with base plate.



| Type                               | HSN Code | MRP (INR) |
|------------------------------------|----------|-----------|
| BCP150 LED150/WW PSU 220-240V 7043 | 9405     | 11,500/-  |
| BCP151 LED150/WW PSU 220-240V 7043 | 9405     | 12,000/-  |
| BCP150 LED150/NW PSU 220-240V 7043 | 9405     | 11,500/-  |
| BCP151 LED150/NW PSU 220-240V 7043 | 9405     | 12,000/-  |

## LED Step Light

Robust design LED step-light is IP67/IK10, easy to install, maintain and comes with suitable mounting box.



| Type                                   | HSN Code | MRP (INR) |
|----------------------------------------|----------|-----------|
| BWG150 LED50/WW PSU 220-240V IP67 7043 | 9405     | 7,000/-   |
| BWG150 LED50/NW PSU 220-240V IP67 7043 | 9405     | 7,000/-   |

## UNILIn-ground Range

Uniln Ground LED ground burial range is compact, robust design IP67/IK10 with aluminum diecast housing and stainless trim, IP67 waterproof connectors ensure easy installation & maintenance free.

### UNILIn-ground: LED Marker

Compact design & Robust construction



| Type                       | HSN Code | MRP (INR) |
|----------------------------|----------|-----------|
| BBP210 LED50/WW 1W 12V 30D | 9405     | 1,200/-   |
| BBP211 LED90/WW 2W 12V 30D | 9405     | 1,650/-   |

Driver & accessories price extra for 12 V. refer MI Sheet

### UNILIn-ground: LED Ground Guide

Multiple lighting emission windows to make space out.



| Type                         | HSN Code | MRP (INR) |
|------------------------------|----------|-----------|
| BBP212 LED45/WW 3W 100-240V  | 9405     | 2,250/-   |
| BBP213 LED110/WW 6W 100-240V | 9405     | 3,200/-   |

### UNILIn-ground: Ground Burial

Compact and robust design with diecast aluminum housing and stainless trim, IP68 waterproof connectors.



| Type                               | HSN Code | MRP (INR) |
|------------------------------------|----------|-----------|
| BBP340 LED220/WW 3W 20D 100-240V   | 9405     | 5,000/-   |
| BBP341 LED540/WW 6W 20D 100-240V   | 9405     | 7,200/-   |
| BBP342 LED1200/WW 12W 20D 100-240V | 9405     | 9,000/-   |
| BBP343 LED1800/WW 18W 20D 100-240V | 9405     | 13,500/-  |
| BBP344 LED3600/WW 36W 20D 100-240V | 9405     | 14,550/-  |
| BBP343 LED RGB 18W 20D 24V         | 9405     | 15,000/-  |
| BBP343 LED R 18W 20D 100-240V      | 9405     | 11,500/-  |
| BBP343 LED G 18W 20D 100-240V      | 9405     | 11,500/-  |
| BBP343 LED B 18W 20D 100-240V      | 9405     | 11,500/-  |

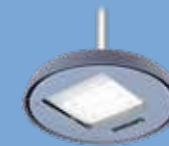
Driver and Accessories price extra for 24 V. refer MI sheet



## UNI Urban

| Type                         | HSN Code | MRP (INR)  |
|------------------------------|----------|------------|
| BSP461 LED40 WW 110-277V TS  | 9405     | On request |
| BSP461 LED40 WW 110-277V TA  | 9405     | On request |
| BSP461 LED78 WW 110-277V TS  | 9405     | On request |
| BSP461 LED78 WW 110-277V TA  | 9405     | On request |
| BSP461 LED120 WW 110-277V TS | 9405     | On request |
| BSP461 LED120 WW 110-277V TA | 9405     | On request |

CCT option: 4000K



## UNI Urban

| Type                              | HSN Code | MRP (INR)  |
|-----------------------------------|----------|------------|
| BSS461 LED40 WW 110-277V CLASSIC  | 9405     | On request |
| BSS461 LED78 WW 110-277V CLASSIC  | 9405     | On request |
| BSS461 LED120 WW 110-277V CLASSIC | 9405     | On request |



## UNI Urban

| Type                            | HSN Code | MRP (INR)  |
|---------------------------------|----------|------------|
| ZSP461 Screw-thread 370mm       | 9405     | On request |
| ZSP461 Screw-thread 240mm       | 9405     | On request |
| ZSP461 Screw-thread 70mm        | 9405     | On request |
| Mandatory Accessory for BSS/BSP | 9405     | On request |

## ZCP461 Chess cover

| Type                            | HSN Code | MRP (INR)  |
|---------------------------------|----------|------------|
| ZCP461 Chess cover              | 9405     | On request |
| Mandatory Accessory for BSS/BSP | 9405     | On request |



## ZCP461 Dome cover

| Type                        | HSN Code | MRP (INR)  |
|-----------------------------|----------|------------|
| ZCP461 Dome cover           | 9405     | On request |
| Mandatory Accessory for BSS | 9405     | On request |

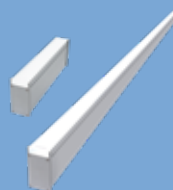


## UNIIn-ground: Linelite

UniInground Linear makes space distinctive with more safety and convenience of installation.

| Type                            | HSN Code | MRP (INR) |
|---------------------------------|----------|-----------|
| BBP403 LED50/WW 2W 24V L300     | 9405     | 7,000/-   |
| BBP403 LED RGB 9W 24V L300 GM   | 9405     | 9,500/-   |
| BBP412 LED200/WW 7W 24V L1200   | 9405     | 13,500/-  |
| BBP412 LED RGB 36W 24V L1200 GM | 9405     | 17,500/-  |

Driver &amp; accessories price extra for 12 V. refer MI Sheet



## UNI Urban

UNIUrban is Decorative Street Light & Post top range with classic design & high performance with Aluminium Diecast housing having IP65/IK08 protection.

| Type                         | HSN Code | MRP (INR)  |
|------------------------------|----------|------------|
| BGP461 LED40 WW 110-277V TS  | 9405     | On request |
| BGP461 LED40 WW 110-277V TA  | 9405     | On request |
| BGP461 LED78 WW 110-277V TS  | 9405     | On request |
| BGP461 LED78 WW 110-277V TA  | 9405     | On request |
| BGP461 LED120 WW 110-277V TS | 9405     | On request |
| BGP461 LED120 WW 110-277V TA | 9405     | On request |

CCT option: 4000K



## UNI Urban

| Type                         | HSN Code | MRP (INR)  |
|------------------------------|----------|------------|
| BDP461 LED33 WW 110-277V TS  | 9405     | On request |
| BDP461 LED65 WW 110-277V TS  | 9405     | On request |
| BDP461 LED100 WW 110-277V TS | 9405     | On request |



Jargeua - Post Top

Jargeau LED combines the heritage look of four-sided street luminaire with the technical performance of high-performance optics, Aluminium Die cast housing having IP65/IK08 protection.



| Type              | HSN Code | MRP (INR)  |
|-------------------|----------|------------|
| Jargeua -Post Top | 9405     | On request |



Tunnel Lights

Flow Base

Flowbase is High performance IP66 Tunnel light with High Power LED light source, PDC housing with high impact resistance (IK08) . It comes with four sizes of configuration with mounting angle of 60 to -60 Degrees.Flowbase optics ensure uniform distribution and savings up to 50%\* w.r.t conventional system and maintenance free system.



| Type                                   | HSN Code | MRP (INR)  |
|----------------------------------------|----------|------------|
| BWP352 LED69/NW 60W 220-240V DM2 MP1   | 9405     | On request |
| BWP352 LED137/NW 120W 220-240V DM2 MP1 | 9405     | On request |
| BWP352 LED206/NW 180W 220-240V DM2 MP1 | 9405     | On request |
| BWP352 LED274/NW 240W 220-240V DM2 MP1 | 9405     | On request |

Viaduct

LED Viaduct is High performance IP66 Viaduct light with High Power LED light source, PDC housing with high impact resistance (IK10). Viaduct optics ensure uniform distribution.



| Type       | HSN Code | MRP (INR)  |
|------------|----------|------------|
| BWP120-20W | 9405     | On request |

10 KV SPD provisioned.



PHILIPS



# Architectural Lights

---



## Blast\*

This high-performance line of exterior luminaires offers an extremely wide range of light output, beam angles, and accessories.



| Type                                                              | MRP (INR)  |
|-------------------------------------------------------------------|------------|
| Intellihue Blast Gen4 Powercore, Clear Lens, White Housing, UL/Ce | On request |
| Intellihue Blast Gen4 Powercore, Clear Lens, Black Housing, UL/Ce | On request |

## Reach & Reach Compact\*

Reach Powercore is ideal for illuminating large surfaces. Flood luminaires can throw fully-saturated light to great heights.



| Type                                                | MRP (INR)  |
|-----------------------------------------------------|------------|
| ColorReach Powercore, GEN2, 100-277V, UL/CE         | On request |
| ColorReach Powercore, GEN2, RGBW, 100-277V, UL/CE   | On request |
| ColorReach Compact Powercore, 100-277V, UL/CE       | On request |
| ColorReach Compact Powercore, RGBW, 100-277V, UL/CE | On request |

## ReachElite\*

**Go farther with powerful, precision-controlled light that reaches new heights.**

ReachElite delivers exceptional light to bridges, façades, monuments, and skyscrapers—illuminating the tallest structures and highlighting details up to 564 m (1,852 ft) away with the 300 W luminaire. This family of long-throw exterior LED luminaires make it happen with high punch and rock-solid reliability.



| Type                                                      | MRP (INR)  |
|-----------------------------------------------------------|------------|
| ReachElite Intellihue Powercore, 100W, 100-277V UL/CE/CQC | On request |
| ReachElite Intellihue Powercore, 200W, 100-277V UL/CE/CQC | On request |
| ReachElite Intellihue Powercore, 300W, 100-277V UL/CE/CQC | On request |

\* Also available in RGB/RGBW/RGBA/White version

## Graze\*

This high-performance linear exterior wall grazing family of luminaires offers high-quality light in a wide range of luminaire lengths, beam angles, output levels, and power consumption levels.



| Type                                           | MRP (INR)  |
|------------------------------------------------|------------|
| ColorGraze Intellihue Powercore, 1ft, 9 Degree | On request |
| ColorGraze Intellihue Powercore, 4ft, 9 Degree | On request |

## Burst\*

This family of high-output, exterior-rated LED lighting luminaires is designed for accent and site lighting. Most versions feature multiple housing colors and standard architectural and landscape formats.



| Type                                                                | MRP (INR)  |
|---------------------------------------------------------------------|------------|
| ColorBurst Intellihue Powercore, Black Housing, Architectural Mount | On request |
| ColorBurst Intellihue Powercore, White Housing, Architectural Mount | On request |

\* Also available in RGB/RGBW/RGBA/White version



## Accent Compact

This family of direct view linear LED luminaires is ideally suited for displaying large-scale video, graphics, and intricately designed effects.



| Type                                                                | MRP (INR)  |
|---------------------------------------------------------------------|------------|
| iColor Accent Compact, RGBW, Ethernet, 1.2M (4ft), Translucent Lens | On request |
| iColor Accent Compact, RGBW, Ethernet, 1.2M (4ft), Clear Flat Lens  | On request |

## iColor MR Lamp

iColor MR Gen3 is an intelligent color-changing lamp that delivers intense, saturated bursts of color and color-changing effects. The stylish housing fits into most standard MR16 luminaires, including tracks, cables, rails, and pendants.



| Type                    | MRP (INR)  |
|-------------------------|------------|
| iColor MR G3, 17 Degree | On request |
| iColor MR G3, 30 Degree | On request |
| iColor MR G3, 90 Degree | On request |

## Purestyle Compact\*\*

Innovative PureStyle Compact Powercore luminaires bring lighting professionals high output in a compact, easily concealed luminaire. PureStyle Compact delivers exceptionally high-quality light for a wide range of interior applications from cove to wall-washing to backlighting and beyond. PureStyle Compact is designed for tight niches where color mixing directly out of the luminaire is important.



| Type                                   | MRP (INR)  |
|----------------------------------------|------------|
| Purestyle Compact, Intellihue, HO, 1ft | On request |
| Purestyle Compact, Intellihue, HO, 4ft | On request |
| Purestyle Compact, Intellihue, LO, 1ft | On request |
| Purestyle Compact, Intellihue, LO, 4ft | On request |

\*\* Also available in RGBW version

## Archipoint

ArchiPoint iColor Powercore is a daylight-visible, exterior-rated LED point of light ideally suited for a range of direct-view and beacon applications.



| Type                                                                | MRP (INR)  |
|---------------------------------------------------------------------|------------|
| Archipoint iColor Powercore, Translucent Dome Lens, 100-240V, UL/CE | On request |
| Archipoint iColor Powercore, Clear Flat Lens, 100-240V, UL/CE       | On request |

## Flex

Cover almost any structure with flexible strands of bright LED nodes.

Flex means maximum flexibility. Strands of efficient, addressable Flex nodes can be arranged along a nearly limitless array of surfaces and unconventional structures. Our proven Flex family of direct-view LED luminaires can do it all—from displaying messages on curved building façades to bringing stunning LED light shows to stadium roofs.



| Type                                                                               | MRP (INR)  |
|------------------------------------------------------------------------------------|------------|
| iColor Flex LMX GEN2, 4IN OC, white node/cable, clear flat lens, 3ft leader        | on request |
| iColor Flex LMX GEN2, 12IN OC, white node/cable, clear flat lens, 3ft leader       | on request |
| iColor Flex LMX GEN2, 4IN OC, white node/cable, translucent dome lens, 3ft leader  | on request |
| iColor Flex LMX GEN2, 12IN OC, white node/cable, translucent dome lens, 3ft leader | on request |



Controllers / Power Supplies /  
Keypads / Softwares



| Type                                                                 | MRP (INR)  |
|----------------------------------------------------------------------|------------|
| Controller, VSM Pro SSD, DVI                                         | On request |
| Controller, VSM Pro SSD, Composite                                   | On request |
| Controller, Light System Manager (Gen 5) 15000 Node                  | On request |
| Controller, Iplayer 3/Colorplay 3, EU Cable                          | On request |
| Controller, Iplayer3 Serial Keypad, White                            | On request |
| Controller, Iplayer3 Aux Box, Universal Power                        | On request |
| Colordial Pro                                                        | On request |
| Ethernet Switch with POE Ports For Use with Colordial2               | On request |
| Power Over Ethernet Injector W/ EU Line Cord                         | On request |
| Controller, iColor Communication Module                              | On request |
| iColor Player                                                        | On request |
| Controller, Smartjack Pro                                            | On request |
| Multi-Protocol Converter                                             | On request |
| Controller, Activesite Gateway                                       | On request |
| AntumbraButton Ethernet Keypad Communication Module                  | On request |
| AntumbraButton Application Module-Facia (Ordered via Dynalite Codes) | On request |



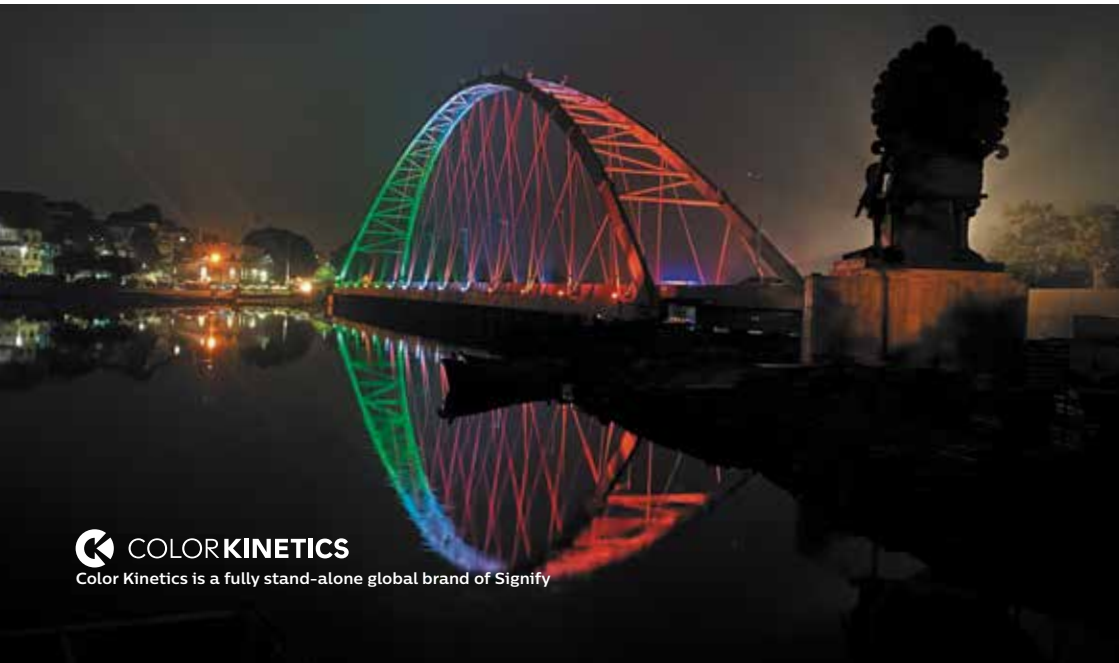
Uniflood

Uniflood C

UniFlood C is a circular shaped, exterior-rated architectural LED floodlight that is designed for façade, landscape and outdoor flood lighting applications like; illuminating multi-story exterior facades, bridges, landmarks and monuments. Available in white, monochromatic colors, RGB, RGBW and tunable white and DMX512/RDM control options.



| Type                         | MRP (INR)  |
|------------------------------|------------|
| Uniflood C Compact (21W-27W) | On request |
| Uniflood C Small (27W-36W)   | On request |
| Uniflood C Medium (50W-80W)  | On request |
| Uniflood C large(110W-150W)  | On request |



Uniflood M

UniFlood M is a modular, rectangular shaped exterior-rated architectural LED floodlight that is designed for façade, landscape and outdoor flood lighting applications like; illuminating multi-story exterior facades, bridges, landmarks and monuments. Available in white, monochromatic colors, RGB, RGBW and tunable white and DMX512/RDM control option



| Type                               | MRP (INR)  |
|------------------------------------|------------|
| UniFlood M Single Head (40W-144W)  | On request |
| UniFlood M Double Head (160W-290W) | On request |
| UniFlood M Tripple Head (430W)     | On request |

Uniflood G

UniFlood G is a rectangular shaped exterior-rated architectural LED floodlight that is designed for façade, landscape and outdoor flood lighting applications like ; illuminating multi-story exterior facades, bridges, landmarks and monuments. Available in white, monochromatic colors, RGB, RGBW and tunable white and DMX512/RDM control option



| Type                               | MRP (INR)  |
|------------------------------------|------------|
| UniFlood G Single Head (120W-300W) | On request |
| UniFlood G Double Head (240W-600W) | On request |

UniStrip G4

UniStrip G4 (AC) is a surface mounted, exterior-rated LED linear flood light luminaire that is designed for wall washing and grazing architectural lighting applications like; illuminating buildings facades, bridges, overpasses and any application that requires a linear lighting solution. Available in white, monochromatic colors, RGB, RGBW and tunable white with different lengths (300mm,500mm, 520m & 1000mm).



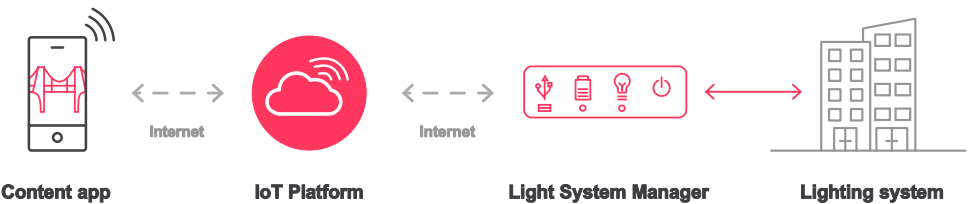
| Type                             | MRP (INR)  |
|----------------------------------|------------|
| UniStrip G4 AC BCP383(15W-50W)   | On request |
| UniStrip G4 AC BCP384 (20W-80W)  | On request |
| UniStrip G4 AC BCP385 (50W-120W) | On request |

Terms & Conditions

- Please choose correct system configuration. (Only Philips Employees /Authorised Value Added Partners & System Integrators should be consulted).
- GST Extra as applicable in case of discounts considered on MRP.
- Warranty 1 year against manufacturing defects.
- Installation, Testing & Commissioning Extra as applicable.
- AMC available on request.
- Automatic Voltage Stabilizer & external SPD is MANDATORY for all Architectural lighting luminaires to claim the warranty
- The company reserves the right to discontinue / add new variants in the product range.

Make your landmark shine, with a swipe on your smartphone

Cloud-based control





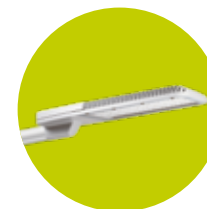




Signify offers a variety of Offgrid and Hybrid solar propositions catering to the needs of urban, semi-urban as well as rural communities.



Street Lighting  
All-in-One



Street Lighting  
High Lumen  
Non-integral



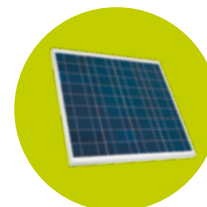
Street Lighting  
Low Lumen  
Non-integral



City Beautification



Flood Lighting



PV Panel  
subsystem



Combo Charge  
controllers



Battery  
subsystem



Indoor systems



Portable lanterns

# Solar Lighting

## Standalone LED street lighting system

Ideal for remote, rural and sub urban locations with no electricity. Also suitable for different low wattage, offgrid, solar outdoor applications driven by clean energy initiatives.



## SmartBright Solar: Street lighting range



Complete system comprises of Luminaire with inbuilt charge controller, Battery, PV Panel and pole and mounting accessories

|                                                       |          |            |
|-------------------------------------------------------|----------|------------|
| Standalone solar lighting system from 900-2100 lumens | 94055040 | On request |
|-------------------------------------------------------|----------|------------|

\* Actual product image may vary depending on the luminaire type / wattages.

## GreenLine V2 Solar



Complete system comprises of configurable Luminaire with inbuilt charge controller, Battery, PV Panel and pole and mounting accessories

|                                                        |          |            |
|--------------------------------------------------------|----------|------------|
| Standalone solar lighting system from 1600-5000 lumens | 94055040 | On request |
|--------------------------------------------------------|----------|------------|

\* Actual product image may vary depending on the luminaire type / wattages.

## Sunstay

Integrated all-in-one solar street light with Lithium Ferro Phosphate battery, solar panel and charger built into the luminaire. Pressure die cast aluminium for sturdiness and long life. Specially designed pole mounting bracket allows different tilt angles, lateral and pole top mounting. SunStay has highest ever system efficacy of more than 175lm/w.



| Offgrid                                                        | HSN Code | MRP (INR) |
|----------------------------------------------------------------|----------|-----------|
| BRP710 LED20 CW MR S1 12V LFP AIO Solar Equip IN - with Sensor | 94055040 | 35,000/-  |
| BRP710 LED30 CW MR S1 12V LFP AIO Solar Equip IN - with Sensor | 94055040 | 49,000/-  |
| BRP710 LED45 CW MR S1 12V LFP Solar IN - with Sensor           | 94055040 | 70,000/-  |

CCT option: 3000K and 4000K. Option available without sensor. Option available with fixed dimming profile.

Hybrid Sunstay powered by solar energy and at the same time connected to the electric grid. In case of abundant sunlight, it uses solar energy and otherwise it draws energy from the grid.



| Hybrid                               | HSN Code | MRP (INR) |
|--------------------------------------|----------|-----------|
| BRP710 LED20 CW MR HY SOLAR IN       | 94055040 | 42,000/-  |
| BRP710 LED20 CW MR HY FDM50 SOLAR IN | 94055040 | 42,000/-  |
| BRP710 LED30 CW MR HY SOLAR IN       | 94055040 | 56,000/-  |
| BRP710 LED30 CW MR HY FDM50 SOLAR IN | 94055040 | 56,000/-  |
| BRP710 LED45 CW MR HY SOLAR IN       | 94055040 | 77,000/-  |
| BRP710 LED45 CW MR HY FDM50 SOLAR IN | 94055040 | 77,000/-  |
| BRP710 LED60 CW MR HY FDM20 SOLAR IN | 94055040 | 85,000/-  |

CCT option: 3000K and 4000K

## SmartBright All-in-one Solar Street Light

All-in-one Solar street light range up-to 12000 Lumen with inbuilt Lithium Ferro Phosphate batteries, Monocrystalline solar panel and MPPT charge controller



| Offgrid           | MRP (INR)  |
|-------------------|------------|
| BRP110 LED50/757  | 72,000/-   |
| BRP110 LED85/757  | 92,000/-   |
| BRP110 LED120/757 | 1,60,000/- |

## LifeLight / LifeLight Plus

Solar lantern for offgrid communities with mobile charging facility and optional AC charging. By harnessing the abundant energy from the sun, these LED lanterns deliver free and clean lighting along with additional facility to charge mobile phones.



| Type                                                    | HSN Code | MRP (INR)  |
|---------------------------------------------------------|----------|------------|
| Solar Lamp Life Light-WC with USB cable for AC charging | 94055040 | On request |
| Solar Lamp Life Light                                   | 94055040 | On request |
| LifeLight Plus                                          | 94055040 | On request |

Urbanspark

Urbanspark is Integrated solar post top lantern with Lithium Ferro Phosphate battery with vertically mounted panels on all four sides to catch sunlight throughout the day. Choice of street light and post top optics.



| Type                                        | HSN Code | MRP (INR)  |
|---------------------------------------------|----------|------------|
| UrbanSpark post top with 4m integrated pole | 94055040 | On request |
| Urban spark with 6m integrated pole         | 94055040 | On request |

Gen 4.0 Solar standalone street light system: Offgrid and Hybrid

Complete range of configurable and connected solar street lights upto 24000 lumens. Suitable for major, intermediate and minor roads for new points as well as grid connected renovation projects.



| Type                                         | HSN Code | MRP (INR)  |
|----------------------------------------------|----------|------------|
| System Configurable Option upto 8000 Lumen : | 94055040 | On request |
| System Configurable Option upto 13000 Lumen  | 94055040 | On request |
| System Configurable Option Upto 24000 Lumen  | 94055040 | On request |

Gen 4.0 Solar standalone Flood light system : Offgrid and Hybrid

Complete range of configurable and connected solar flood lights upto 15000 lumens. Suitable for major, intermediate and minor roads for new points as well as grid connected renovation projects.



| Type                                        | HSN Code | MRP (INR)  |
|---------------------------------------------|----------|------------|
| System Configurable Option upto 3000 Lumen  | 94055040 | On request |
| System Configurable Option upto 8000 Lumen  | 94055040 | On request |
| System Configurable Option Upto 12000 Lumen | 94055040 | On request |
| System Configurable Option Upto 15000 Lumen | 94055040 | On request |



Solar Indoor System

Solar indoor system for communities without access to electricity or with unreliable power supply. By harnessing the abundant energy from the sun, these systems deliver free and clean power to multiple lamps and appliances enhancing the lifestyles of remote communities.



SIS COMPACT



SIS 30



SIS 200



# Bright Sites

by Signify

## Smart Poles for Smart Cities



Outdoor - Smart poles

### BrightSites H-Series Slim Poles have all you need to improve your city in a single pole.

From enhanced broadband connectivity, surveillance cameras, environmental monitoring with IoT sensors, you can lead the transformation to a smarter, connected, safer and healthier city with the help of BrightSites H-Series Slim Poles.

#### How BrightSites benefits all



**Elegant and multi-functional design** BrightSites offer an elegant and aesthetically pleasing multi-functional H-Series Slim Poles. Available in various heights, colors, styles; they enable integration into any streetscape with optimal visual impact.



**Digital pathway** Using the ubiquity of a city's existing street lighting infrastructure, BrightSites H-Series Slim Poles deliver 4G/5G, Wi-Fi, fiber hubs, mm-wave wireless and option to accommodate wide range of IoT applications.



**Easy deployment and scalability** Municipalities and mobile network operators can deploy hundreds of smart poles as a standardized solution for cell sites with IoT solutions quickly and easily, making it possible to densify network capacity with a minimal disruption.



**Energy Efficiency** Signify LED lighting provides a cost-effective, low-maintenance alternative to traditional street lighting

### BrightSites H-Series Slim Poles enable city-wide, future-proof wireless broadband networks by reusing the existing street lighting infrastructure.

BrightSites helps cities meet the needs of citizens, businesses, and visitors by delivering the faster, more available broadband connectivity that helps ensure non-stop access to their digital world. But it delivers these capabilities in an extremely smart, city-friendly solution that leverages the current urban infrastructure, improves efficiency and reduce costs.

#### Customization

U BrightSites H-Series Slim Poles are available in various heights, colors and styles, enabling integration into any streetscape with minimal visual impact. BrightSites H-Series Slim Poles come in standard heights ranging from 4 to 12 meters with flexibility to place the luminaire at different positions and heights on the pole in order to maintain a consistent illumination pattern on the streets.

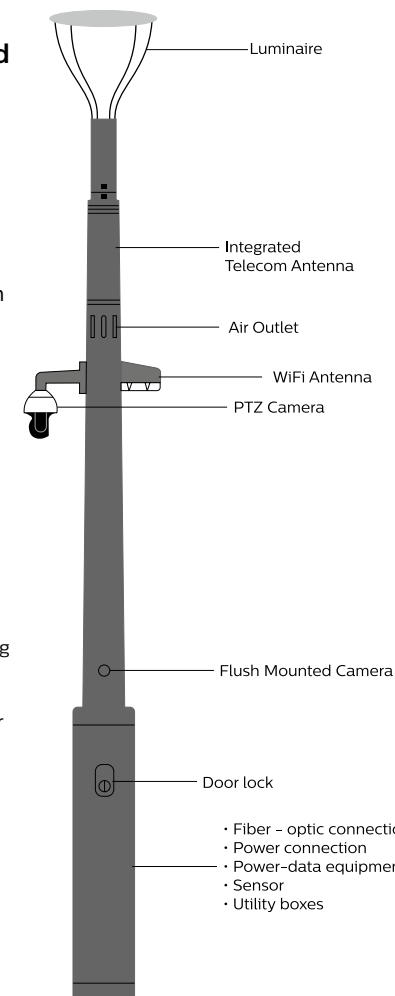
#### Connectivity

BrightSites integrates small cell Wi-Fi radios and IoT providing high-speed, high-capacity wireless network access and the optimal urban network coverage that residents, businesses and visitors demand without cell towers, pole attachments or other visual clutter.

#### Proven Success

Innovative cities already rely on H-Series Slim Poles from Signify to deliver new services and value to residents, businesses and visitors.

For solutions & pricings detail contact Signify representatives



# Lighting Controls



## Philips Dynalite the intelligent choice

For Connected & Smart buildings , Dynalite is has been tried & tested as of the world's finest lighting control system in more than 30,000 projects. Philips Dynalite has implemented some of the largest and most extensive control networks around the globe. The same robust technology can be used in any application, on any scale.



### ENERGY SAVINGS

Automatically detecting occupancy and available natural daylight allows the system to introduce energy savings



### SETTING THE SCENE

Purely aesthetic management of a space.



### EASE OF USE

User Interface that allows them to get access to such functionality



### INTEGRATION

Ensuring multiple methods of two-way communication with 3rd party systems



### SITE MONITORING

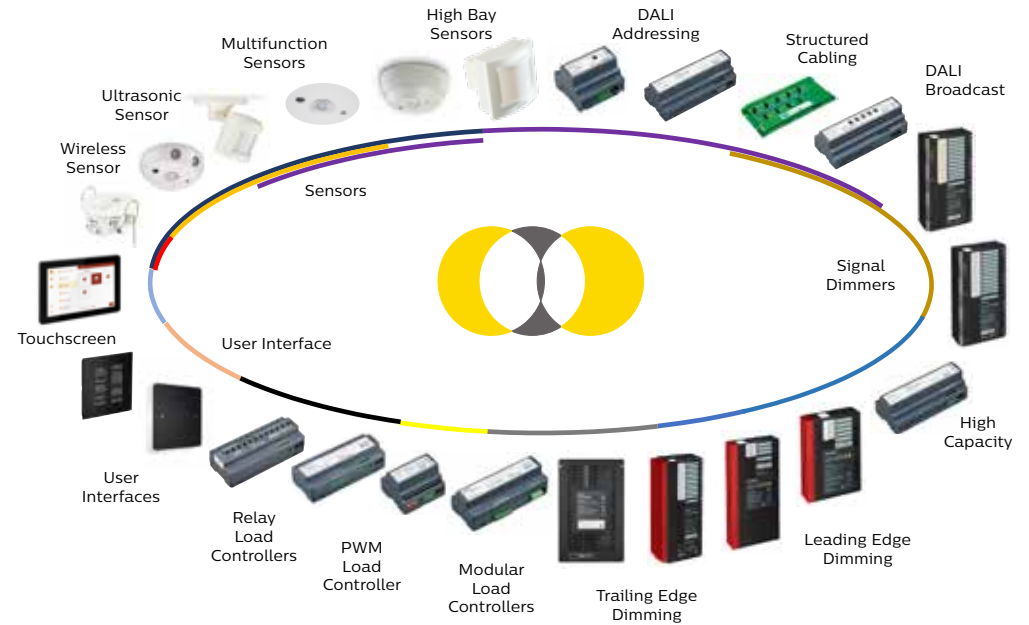
Reporting results and potential solutions via dashboard software.



### EASY OF INSTALLATION

Din Rail Mounted/Wall Mounted controllers

## Dynalite Ecosystem



## Multilingual-Integration



RS485

RS232



## In-house Software Suite



### System Manager

End user software & Dashboard



### System Builder

Configuration & software tool



### Control App

Mobile control

## Standalone Controls

Occuswitch is a movement detector with a build-in switch. It will switch off the lights in a room or area when it is vacated and thus save energy. It can switch any load up to 6 A and control an office area of around 20 Sqm for small movement (e.g. desk work) and around 50Sqm for large movement (e.g. walking). It is smart daylight sensing technology offers additional saving through daylight override and daylight switching.



| Type                                      | MRP (INR) |
|-------------------------------------------|-----------|
| LRM1071/10 - OccuSwitch Movement Detector | 4,000/-   |
| LRM1061/00 Occuswitch Surface Mount       | 4,500/-   |

## Network Lighting Controls

Philips Dynalite creates sophisticated, reliable, and energy-efficient lighting control solutions for residential, offices, retail, hospitality, industry, stadiums, public spaces, and more.

| Type                                                                      |  |
|---------------------------------------------------------------------------|--|
| DDBC120-DALI MultiMaster DALI Driver Controller                           |  |
| DDBC320-DALI DALI Driver Controller                                       |  |
| DDBC516FR Signal Dimmer Controller                                        |  |
| DDRC420FR Relay Controller                                                |  |
| DDRC1220FR-GL Relay Controller                                            |  |
| DDLE802 Leading Edge Dimmer Controller                                    |  |
| DDMC802 Multipurpose Modular Controller                                   |  |
| DUS360CR Multifunction Sensor                                             |  |
| DUS804CS-UP Multifunction Sensor Ultrasonic                               |  |
| DUS90AHB-DALI Multifunction Sensor -Aisleway high bay DALI network sensor |  |
| SNS401CMP Wireless Group Controller                                       |  |
| Antumbra Button/ Touch/Display Keypad                                     |  |
| PDTS Networked Touchscreen                                                |  |
| PDEG Ethernet Gateway                                                     |  |
| DDNG-BACnet BACnet Network Gateway                                        |  |
| PDZG-E ZigBee Gateway                                                     |  |
| DLI18180 Dry Contact Interface                                            |  |
| DDFCUC010 Fan Coil Unit Controller                                        |  |



### Education

Setting the lighting to match the lesson



### Hospitality

Monitoring power consumption and creating a lighting scenes



### Boardroom control

Adjusting for meeting, presentation, discussion



### Open office

In tune with occupancies natural Biorhythms

### Terms & Conditions

- Price for network controls can be shared on request
- Please choose correct system configuration/Components for Network controls. (Only Philips Employees/Authorised Value Added Partners & System Integrators should be consulted).
- GST Extra as applicable in case of discounts considered on MRP.
- Warranty 1 year against manufacturing defects.
- Installation, Testing & Commissioning Extra as applicable.
- AMC available on request.
- The company reserves the right to discontinue/add new variants in the product range.



VERSACE

VERSACE

LED Lamp



## Philips TrueForce LED Road

Philips TrueForce LED Road is the world's first direct (Plug&Play) replacement SON-T LED lamp for street lighting, making it easy to upgrade existing installations to LED without a need to rewire or change a luminaire. It is the simplest way to start saving on energy consumption and improve light quality, while keeping your initial investment low.



| Type                           | HSN Code | MRP (INR)  |
|--------------------------------|----------|------------|
| TForce LED Road 58-35W E27 730 | 9290     | On request |
| TForce LED Road 60-35W E27 740 | 9290     | On request |

## Philips TrueForce LED Industrial and Retail Highbay Retrofit lamps

Philips TrueForce LED Industrial and Retail (Highbay – HPI/SON/HPL) lamps give you a quick and easy payback solution to replace HID lamps in Highbay application. The solution gives you the LED benefits of energy-efficiency and long-lifetime, plus they come for a low initial investment. Lamp design allows retrofit HID lamps with TrueForce LED lamps with no gear loss and high power factor. Multiple beam angle options and high color rendering index enhance the lighting distribution while creating a comfortable, safe and high productivity environment.



| Type                           | HSN Code | MRP (INR) |
|--------------------------------|----------|-----------|
| TForce HB 100-85W E40 840 120D | -        | 7000/-    |
| TForce HB 100-85W E40 865 120D | -        | 7000/-    |

| Type                         | HSN Code | MRP (INR) |
|------------------------------|----------|-----------|
| TForce HB 140W E40 840 NB GM | -        | 9,999/-   |
| TForce HB 140W E40 840 WB GM | -        | 9,999/-   |
| TForce HB 140W E40 865 NB GM | -        | 9,999/-   |
| TForce HB 140W E40 865 WB GM | -        | 9,999/-   |

## Philips TrueForce Core LED Industry and Retail (Highbay– HPI/SON/HPL) lamps

Philips TrueForce Core LED Industry and Retail (Highbay– HPI/SON/HPL) lamps give you a quick and easy payback solution to replace HID/CFLi lamps in industrial application. The solution gives you the LED benefits of energy-efficiency and long-lifetime, plus they come for a low initial investment. Lamp design allows to replace HID/CFLi lamps with no gear loss and high power factor.



| Type                          | HSN Code | MRP (INR)  |
|-------------------------------|----------|------------|
| TForce Core HB 26-30W E27 830 | -        | On request |
| TForce Core 27W/3000lm B22    | -        | 799/-      |
| TForce Core 27W/3000lm E27    | -        | 799/-      |
| TForce Core HB 28-30W E27 840 | -        | On request |
| TForce Core 37W/4000lm B22    | -        | 1,099/-    |
| TForce Core 37W/4000lm E27    | -        | 1,099/-    |
| TForce Core HB 40-40W E27 840 | -        | On request |
| TForce Core HB 40-40W E27 865 | -        | On request |
| TForce Core 47W/5000lm B22    | -        | 1,399/-    |
| TForce Core 47W/5000lm E27    | -        | 1,399/-    |
| TForce Core HB 48-50W E27 830 | -        | On request |
| TForce Core HB 50-50W E27 840 | -        | On request |
| TForce Core HB 50-50W E27 865 | -        | On request |
| TForce Core HB 48-50W E40 830 | -        | On request |
| TForce Core HB 50-50W E40 840 | -        | On request |
| TForce Core HB 50-50W E40 865 | -        | On request |
| TForce Core HB 70-65W E40 840 | -        | On request |
| TForce Core HB 70-65W E40 865 | -        | On request |
| TForce Core HB 85-67W E40 865 | -        | -          |
| TForce Core HB 90-80W E40 840 | -        | On request |
| TForce Core HB 90-80W E40 865 | -        | On request |

## Accessories for Tforce Core LED HID range



| Type                         | HSN Code | MRP (INR) |
|------------------------------|----------|-----------|
| TForce E27 lamp holder       | -        | 1,000/-   |
| TForce E40 lamp holder       | -        | 1,100/-   |
| TForce 12inch lamp reflector | -        | 1,450/-   |
| TForce 16inch lamp reflector | -        | 1,800/-   |

## True Force Post Top Lamps

Philips TrueForce LED lamps provide an easy LED solution with a fast payback to replace High-Intensity Discharge (HID) lamps. These lamps bring the energy efficiency and long lifetime benefits of LED to HID replacement, with a low initial investment delivering instant savings. With the right lamp size and light distribution, customers can easily retrofit TrueForce LED lamps into their existing system, thereby enhancing the light quality without having to change the fixtures or sacrifice the light effect.



| Type                                | HSN Code | MRP (INR) |
|-------------------------------------|----------|-----------|
| TForce LED HPL ND 44-33W E27 740 FR | -        | 3,499/-   |
| TForce LED HPL ND 48-33W E27 740 CL | -        | 3,499/-   |

## LED PL-L 18W

Cost effective and easy way to move to LED without changing the 2'x2' conventional fittings.

| Type                     | HSN Code | MRP (INR) |
|--------------------------|----------|-----------|
| LED PL-L 18W, 6500K 2G11 | -        | 599/-     |



## Essential LED spots MR16/GU10 Lamps

Essential LEDspots MR16/GU10 are compatible with most existing fixtures with a GU5.3 socket and are designed as a retrofit replacement for halogen spots. Essential LEDspots MR16/ GU10 deliver significant energy savings and minimize initial investment.



| Type                                  | HSN Code | MRP (INR) |
|---------------------------------------|----------|-----------|
| ESS LED MR16 4.5-50W 36D 830 100-240V | -        | 299/-     |
| ESS LED MR16 4.5-50W 36D 865 100-240V | -        | 299/-     |
| Essential LED 4.6-50W GU10 827 36D    | -        | 299/-     |
| Essential LED 4.6-50W GU10 830 36D    | -        | 299/-     |
| Essential LED 4.6-50W GU10 865 36D    | -        | 299/-     |

## Master LEDspot ExpertColor MV range

MASTER LEDspot MV ExpertColor creates a warm and comfortable ambience for hospitality venues, homes and restaurants. It creates ambience with superior lighting that has a customised spectrum, high CRI and deep dimming features. The result being a beautiful lighting experience. The innovative, trimless lens design will also suit almost any interior decor with its clean and neat look. In addition, you can take advantage of the full ExpertColor family, which also includes LEDspot LV and LEDspot Par lamps.



| Type                                     | HSN Code | MRP (INR) |
|------------------------------------------|----------|-----------|
| MAS LED MR16 ExpertColor 7.2-50W 927 10D | -        | 1,699/-   |
| MAS LED MR16 ExpertColor 7.2-50W 930 10D | -        | 1,699/-   |
| MAS LED MR16 ExpertColor 7.2-50W 940 10D | -        | 1,699/-   |
| MAS LED MR16 ExpertColor 7.2-50W 927 24D | -        | 1,699/-   |
| MAS LED MR16 ExpertColor 7.2-50W 930 24D | -        | 1,699/-   |
| MAS LED MR16 ExpertColor 7.2-50W 940 24D | -        | 1,699/-   |
| MAS LED MR16 ExpertColor 7.2-50W 927 36D | -        | 1,699/-   |
| MAS LED MR16 ExpertColor 7.2-50W 930 36D | -        | 1,699/-   |
| MAS LED MR16 ExpertColor 7.2-50W 940 36D | -        | 1,699/-   |
| MAS LED MR16 ExpertColor 7.2-50W 927 60D | -        | 1,699/-   |
| MAS LED MR16 ExpertColor 7.2-50W 930 60D | -        | 1,699/-   |
| MAS LED MR16 ExpertColor 7.2-50W 940 60D | -        | 1,699/-   |
| MAS LED ExpertColor 5.5-50W GU10 927 24D | -        | 999/-     |
| MAS LED ExpertColor 5.5-50W GU10 930 24D | -        | 999/-     |
| MAS LED ExpertColor 5.5-50W GU10 927 36D | -        | 999/-     |
| MAS LED ExpertColor 5.5-50W GU10 930 36D | -        | 999/-     |

## LED GU10 Kits

LED GU10 KITS are a perfect for spot lighting and deliver warm halogen-like light



| Type                      | HSN Code | MRP (INR) |
|---------------------------|----------|-----------|
| LED 50W GU10Kit_R 827 36D | -        | 470/-     |
| LED 50W GU10Kit_R 840 36D | -        | 470/-     |
| LED 50W GU10Kit_R 865 36D | -        | 470/-     |
| LED 50W GU10Kit_S 827 36D | -        | 470/-     |
| LED 50W GU10Kit_S 840 36D | -        | 470/-     |
| LED 50W GU10Kit_S 865 36D | -        | 470/-     |



## Essential LED spots MR16/GU10 Lamps

Essential LEDspots MR16/GU10 are compatible with most existing fixtures with a GU5.3 socket and are designed as a retrofit replacement for halogen spots. Essential LEDspots MR16/ GU10 deliver significant energy savings and minimise initial investment.



| Type                                  | HSN Code | MRP (INR) |
|---------------------------------------|----------|-----------|
| ESS LED MR16 4.5-50W 36D 830 100-240V | -        | 299/-     |
| ESS LED MR16 4.5-50W 36D 865 100-240V | -        | 299/-     |
| Essential LED 4.6-50W GU10 827 36D    | -        | 299/-     |
| Essential LED 4.6-50W GU10 830 36D    | -        | 299/-     |
| Essential LED 4.6-50W GU10 865 36D    | -        | 299/-     |

## Master LEDspot LV (Dimmable & Non Dimmable)

Delivering intense accent beam, MASTER LEDspot LV is an ideal retrofit solution for spot lighting. MASTER LEDspot LV is designed to replace halogen or incandescent spots. It realises natural colors, enables cozy and comfortable ambience for residential, hospitality and emphasises the beauty of merchandise in retail. New smaller housing provides perfect fitting with majority of luminaires in a market with a MR16 GU 5.3 holder. It not only employs Philips' patented solution to guarantee the broadest possible compatibility with standard 12V halogen electronic transformers, it also delivers high beam intensity which is equivalent to halogen MR16 spots. The dimming function enables to create the desired atmosphere and it works with broad selection of dimmers. Its high SDCM ensures stricter color consistency, that is maintained over product life. MASTER LEDspot LV delivers huge energy savings and minimises maintenance cost without any compromise on light quality and lifetime, enabling residential and business owners to achieve a return on their investment within short period time.



| Type                                              | HSN Code | MRP (INR) |
|---------------------------------------------------|----------|-----------|
| MASTER LED 7-50W 927/930/940 MR16 15D/24D/36D Dim | -        | 1,379/-   |
| MASTER LED 8-50W+ 827/830 MR16 24D/36D Dim        | -        | 1,499/-   |
| MASTER LED 4-35W 2700/3000K MR16 24D/36D          | -        | 399/-     |
| MASTER LED 5.5-50W 2700/3000/4000K MR16 24D/36D   | -        | 499/-     |
| MASTER LED 6.5-50W 927/930/940 MR16 24D/36D       | -        | 799/-     |
| Master LED 5-50W GU10 927/930/940 36D Dim         | -        | 599/-     |



LED lamps

## MAS LEDspot LV AR111

With its new perfect-fit design, the Master LEDspot LV AR111 now works with most of G53 luminaires as a true retrofit solution. The lamp creates a brilliant visual effect for retail and hospitality applications such as shops, showrooms and galleries. The high quality light brings out the true colors in merchandise and emphasises its beauty. It also lasts long, with a strong lumen and color maintenance. The beautifully designed lamp offers a well-defined beam with a multitude of beam angles to suit various applications. Not only does it employ the Philips patented solution to ensure it is compatible with a broad selection of standard 12V halogen electronic transformers, it also delivers high beam intensity which is equivalent to halogen AR111 spots of 50W, 75W or 100W.



| Type                                                | HSN Code | MRP (INR) |
|-----------------------------------------------------|----------|-----------|
| MAS LEDspotLV D 11-50W 927/930 AR111 8D/24D/40D     | -        | 1,999/-   |
| MAS LEDspotLV D 15-50W 927/930 AR111 8D/24D/40D     | -        | 2,499/-   |
| MAS LEDspotLV D 20-50W 927/930/940 AR111 8D/24D/40D | -        | 2,999/-   |

## Master LED PAR30L

Philips PAR30S LED Single Optic Lamps with AirFlux Technology provides superior lighting aesthetics and optimal thermal efficiency in a sleek, lightweight design.



| Type                                          | HSN Code | MRP (INR) |
|-----------------------------------------------|----------|-----------|
| Master LED PAR30L 20W 15D/30D 830/840         | -        | 1,299/-   |
| Master LED PAR30L 32W 15D/30D 830/840/857     | -        | 1,999/-   |
| Master LED PAR30L 40W 15D/30D 827/830/840/857 | -        | 1,999/-   |



| Master LEDtube Range                          | HSN Code | MRP (INR) |
|-----------------------------------------------|----------|-----------|
| Mas LEDTube 9W, 900lm, 865 T8                 | 8539     | -         |
| Mas LEDtube 1200mm, 13W865 T8 I IN30 – 1600lm | 8539     | 700/-     |
| Mas LEDtube 18W, 2100lm 865 T8 (VE)           | 8539     | 800/-     |
| Mas LEDtube 1200mm 18W865 T8 I – 2100lm       | 8539     | 800/-     |
| Mas LEDTube 18W 2100lm Kit with Batten        | 8539     | -         |
| Master LEDtube 1200mm 18W865 TEX              | 8539     | 800/-     |
| Mas LEDtube 18W, 865 T8 I – 1800lm            | 8539     | 700/-     |
| Master LEDTube 1200 mm 18W 840 T8 I W         | 8539     | -         |
| Mas LEDTube 30W, 4000lm, 865 T8               | -        | 1,300/-   |
| Mas LEDTube 30W, 4000lm, 865 T8 with Batten   | -        | 1,500/-   |

## Sensor LEDtube

LEDtube with microwave based Sensor Chip.  
Detection Range – 5m radius @ 2.5m ht



| Retrofit LED tube range             | HSN Code | MRP (INR) |
|-------------------------------------|----------|-----------|
| Sensor LEDtube 1200mm 1600lm 14W840 | -        | 2,250/-   |
| Sensor LEDtube 1200mm 1600lm 14W860 | -        | 2,250/-   |

## MasterConnect LEDtube

Philips MasterConnect LEDtube EM/Mains T8 means easy upgrade to a connected lighting system. Its 2.4GHz mesh networking technology enables wireless integration with a variety of control devices, such as sensor and switch. The result? Even more energy saving and enhanced flexibility in your space. Through dimming, occupancy sensing and/or daylight harvesting, lamps deliver up to 85% energy saving thanks to MasterConnect technology.



| Master LEDtube Range                              | HSN Code | MRP (INR) |
|---------------------------------------------------|----------|-----------|
| MAScon LEDtube IA 1200mm UO 16.5W830 T8 – 2300 lm | -        | 3,700/-   |
| MAScon LEDtube IA 1200mm UO 16.5W840 T8 – 2300 lm | -        | 3,700/-   |
| MAScon LEDtube IA 1200mm UO 16.5W865 T8 – 2300 lm | -        | 3,700/-   |



Connected



3000/4000/6500



50,000 hours



Wireless Dimmable



Beam angle



Rotatable (ROT)



CRI



G13 cap

## LEDtube range

LED tube range integrates LED light source with frosted cover design into traditional linear fluorescent form delivering 50%\* energy saving.



| Essential LEDtube Range                           | HSN Code | MRP (INR) |
|---------------------------------------------------|----------|-----------|
| Essential LEDtube 1200mm 20W865 T8 IND I – 2100lm | 8539     | 400/-     |
| Essential Led tube 20W B2B 865 T8                 | 8539     | 450/-     |

## Abbreviation

### 1. Product family code

SP780P | RC380B | DN295B | RS271B  
ST391T | BY325P | BN308C | BRP409  
| BVP621 | BGP400 | BRP710

### 2. System output

LED100S: 10,000 Lumen  
LED130S: 13,000 Lumen  
LED160S: 16,000 Lumen

### 3. Color temperature

CW/CDL: 6500K/5700K  
NW:4000K  
WW:3000K

### 4. Optics (Indoor)

NB: Narrow Beam 60°  
WB: Wide beam 110°  
SK: Symmetric beam  
AK: Asymmetric beam

### 5. Optics (Outdoor Product)

MR: Optics for Main Road  
NR: Optics for Narrow Road  
SLA: Street Light Optics A Class  
SLC: Street Light Optics C Class  
SWB: Symmetric Wide Beam  
AWB: Asymmetric Wide Beam  
NB: Narrow Beam  
SY20: Symmetric beam 20 Degree  
AK: Asymmetric Beam

### 6. Optics (Retail)

NB: Narrow Beam  
MB: Medium Beam  
WB: Wide Beam

### 7. Controls

PSU: Fixed output  
PSD: DALI Dimmable  
PSR: 0-10 Analog Dimmable

### 8. Phase:

1C: Single Circuit  
3C: Triple Circuit

### 9. Variant

V1: Version 1  
V2: Version 2

### 10. Width (Appx. Dimension)

W6: 60mm Width  
W7: 70mm Width  
W30: 300mm width  
W60: 600mm width

### 11. Length (Appx. Dimension):

L120: 1200mm length  
L60: 600mm Length  
L30: 300mm length  
L1000: 1000mm length  
L2000: 2000mm length

### 12. Front Cover

FG: Toughened Extra clear flat glass  
PC: Polycarbonate cover  
OD: Opal diffuser  
OA: Opal Acrylic

### 13. Luminaire Color

SI: Silver color  
GR: Grey color  
WH: White color  
BK: Black color

